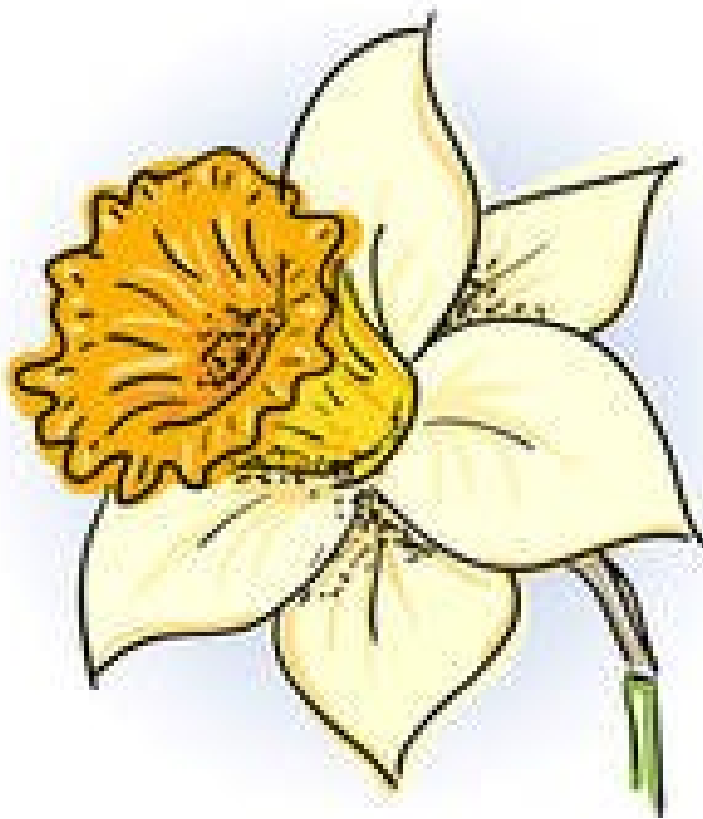


SPOTLIGHT

Seend & Bulkington



March 2019

DIARY DATES FOR LATE FEBRUARY 2019

- 26th Parish Council Meeting, upstairs in Community Centre, 7.30pm
- 27th Nosh & Natter lunch club, Community Centre, 12 for 12.30pm
- 27th Brewery Inn Fun Quiz, 8 pm

DIARY DATES FOR MARCH

- 1st First Friday Coffee Morning, Community Centre, 10.30am
- 2nd Family Fun Night, Community Centre, 6-8pm kids and 9pm-midnight adults
- 4th Mobile Library; 9.40 am Seend The Lye: 10.05 am Seend Cleeve phone box:
11.05 am Well Inn car park
- 6th Salisbury Shuttle Shopping Trip – call 01380 828757 by Monday 4th to book
- 6th Village Lunch at the Well, Bulkington, 12.15 pm
- 9th Soup Lunch, Bulkington Village Hall, 12-1.30pm
- 9th Mixed Pairs skittles competition, Community Centre, 8pm
- 16th **LAST DAY FOR CONTRIBUTIONS FOR APRIL SPOTLIGHT**
- 17th Seend & District Ramblers AGM, Seend Community Centre 11am (short walk first)
- 20th Seend Link AGM, Pavilion, 7pm
- 21st WI Craft Afternoon, 2 to 4 pm, Pavilion
- 26th Parish Council Meeting, upstairs in Community Centre, 7.30pm
- 26th Wessex Fuchsia Group - "Fuchsia Bonsai" with Derek Luther, Pavilion, 7.45pm
- 27th Nosh & Natter lunch club, Community Centre, 12 for 12.30pm
- 27th Brewery Inn Fun Quiz, 8 pm
- 28th SPNPG Meeting
- 31st Mothering Sunday (see p.9 for Church services)
- 31st Your Seend Club 2018/19 membership expires.

DIARY DATES FOR EARLY APRIL

- 5th First Friday Coffee Morning, Community Centre, 10.30am
- 5th Seend Playgroup Easter Bonnet Parade
- 6th Queen Tribute Night, Community Centre

Newcomer to Seend?

Call in at the shop/PO and ask for your copy of the **Welcome booklet**, which tells you all you need to know about the village.

Visit www.seend.org.uk and the Spotlight **facebook** page.

Welcome to March Spotlight.....

The spring lambs are gambolling in the fields – and you can be gambling with the 100+ Club to raise money for the Lye Field and Pavilion. *(Sorry – we're after a prize for the worst link ever.)* You'll find an application form inside this magazine.



Daffodils and Mother's Day seem to go together, so while reminding you all to be good to your Mums on March 31st, we'll also include our annual mention of all the daffodils in the grass verges around Seend that were planted years ago by the late Joe Burbidge MBE and his friends. They still bring us so much pleasure.

And if you're into rugby rather than gambling or daffodils, then do note that most if not all of the local hostleries and Seend Club are showing Six Nations matches on TV – so do check out your preferred local and give them your support.

Seend Fete Committee are still hoping to receive some feedback about last year's fete before getting too deep into arrangements for this year's. Do contact them if you have any suggestions or just to say 'well done'! See p. 3.

In the meantime, enjoy the March events listed in this magazine – from a fun family disco to a soup lunch, and maybe get yourself recruited into a village group like Seend Singers, Historic Houses Club or Bulkington Ladies – to name but a few.

Spotlight Contacts: Contributions for the April edition (copy by Saturday 16th March please can be emailed to spotlight@seend.org.uk or delivered to Seend Post Office. Editors: Tessa Doe (01380 828617) and Sue Isaac (828461). Please note that **you should always send emailed items to the Spotlight address**, not to Sue or Tessa – even if they have emailed you from their own email address – just in case they are not around. Joanna Goddard (828488) organises printing Mondays and also types up the items left at Seend PO. Fiona Johnson is the contact for delivery (828401) and Chris Brooker (828047) for advertising. Volunteer printers or delivers can contact Joanna or Fiona.

Lost emails: Emails to Spotlight sometimes go astray for no obvious reason. If email correspondents don't receive an acknowledgement by the end of the Monday after the Spotlight deadline, please ring Tessa or Sue (see above) to check if all is well. And please note the following. **When sending emails to spotlight@seend.org.uk** please include the word **SPOTLIGHT** in uppercase as the first word of the Subject. This will help the editorial team sifting through all the messages stopped by the SPAM filter, which sometimes include genuine messages for SPOTLIGHT.

PDFs: We cannot normally use PDF or jpg files of posters etc as they require a specific shape and space. Word documents (or compatible) – without any fancy formatting - give us the flexibility to adapt your wording and pictures to fit the space available. Thanks.

VILLAGE EVENTS IN MARCH
(for Bulkington events see pages 10-12)

March and April in SEEND COMMUNITY CENTRE

Nosh and Natter Lunch Club

Wednesday 27th March, 12 for 12.30 pm

Please book in advance by calling Pauline on 01380 828638. Only £5 for two courses – all home-made of course. All welcome!



First Friday Coffee Mornings in the Lounge

From 10.30am on Friday 1st March. Come along for proper coffee, home-made cakes and a chat in good company! It's just £2 for coffee or tea - plus a refill - and a slice of cake. All welcome.

Family Fun Night on 2nd March with a disco and entertainment for kids from 6-8pm and disco for adults from 9-12pm. Entrance £1 and £2 respectively.



Mixed Pairs Skittles on Saturday 9th

March at 8pm. Bring along a partner of the opposite gender to enjoy this fun competition. All welcome – you don't have to be an experienced skittler as beginner's luck often rules, OK. There are PRIZES!

And dates for your April diary.....

April 6th – Majesty – the **QUEEN TRIBUTE BAND**. Tickets on sale NOW; don't leave it too late.

April 23rd – **St George's Day and Shakespeare's Birthday Party**. Seend Fawltly Players invite you to the usual celebratory mix of readings, songs, silliness and supper in the upstairs room. More details next month.



Tickets for the **19th Seend Beer Festival on May 4th in the Community Centre** from noon-11pm are available from the Shop, the Community Centre and the Brewery Inn from March 1st!

BREWERY INN

Wednesday 27th March – Monthly Fun Quiz, 8pm

ANNOUNCEMENTS AND VILLAGE INFORMATION

(Please let us know of any births, marriages, deaths, special birthdays, thanks, useful information etc that you would like to see included here.)



Thank You

My family and I wish to thank all who made my 90th birthday such a memorable occasion. The sun shone, the snow glistened, the pipes skirled and most importantly I was surrounded by friends and relatives – and fantastic cards. What more could a girl ask for? See you all in five years time!

Bet Doig.

Seend Village Fete 2019 – 60th Anniversary Saturday 10th August



The last few weeks have been rather grey and wet and here's hoping that the weather will improve soon.



As we haven't had any comments on our last spotlight entry we would ask again for your feedback (positive & negative) from last year's Fete and more importantly suggestions for this year's Fete. How would you like to mark the occasion? Please send us a message on either seendfete@gmail.com or our Facebook page @seendfete.

“Alone, we can do so little; together, we can do so much” (Helen Keller)

We're also still looking for someone who has experience in Health & Safety and has a little time to spare to help us out. Please do contact us via seendfete@gmail.com

Like last year we're on the lookout for independent craftspeople, designers, makers, producers, traders and retailers from Seend, surrounding villages/towns and the South West. We've had a few enquiries already and would urge anyone that would like a stall to get in touch sooner rather than later to avoid disappointment.

As always if you want to receive updates please sign up to our Facebook page @seendfete. Alternatively check out our website www.seendfete.co.uk

We look forward to hearing from you.



Seend Fawltly Players would like to thank everyone who came to support our 40th Panto. We hope to have raised a significant amount of money to help pay for the new children's play equipment on the Lye Field and will report in a future edition of Spotlight.

70TH
ANNIVERSARY

SEEND FLOWER SHOW - August 10th 2019 **The Platinum Anniversary for the Village's** **Flower Show.**



We hope the Seend and District Community of gardeners, allotmenters, crafters, bakers, brewers and photographers will find something to display and to share their talents in this years schedule.

There have been some changes to the schedule which will hopefully inspire you even more than usual to enter. This will be available on the website once finalised. **seend flowershow.org.uk**

Particularly important to note is in both the adult's and children's sections there is an annual flowers category from seed sown this year. Start planning so that you have some blooming lovely entries!

Please help us to make this special year an outstanding one by taking part in the Parish's oldest community event, either as an exhibitor, join our friendly committee or just come along on the day to see the marvellous displays.

Carole Vince Show Secretary 01380 828579

SEEND OPEN GARDENS 8th/9th June 2019

This is the major fundraising event for our church and is held biennially alternating with The Cleeve open gardens. We would like to thank all of you who already take part on a regular basis and are grateful for your continuing support.

Anybody, including newcomers to the village who may be interested in participating are most welcome. I look forward to hearing from you.

Please contact Tina Yockney on 01380 827139 for further details. Thank you,



SEEND AND DISTRICT LINK 2018 / 2019 AGM

Irene Usher Pavilion - Wednesday 20th March at 7pm

Refreshments Available - All welcome.

Volunteers have come forward to form a new committee, so please come along to show your support.

SEEND PARISH COUNCIL NOTICES

Parish Steward Tasks

Don't forget to let the Clerk know if there are any small jobs for the Parish Steward to do on his monthly visits, eg small potholes needing filling, gullies and drains cleared, weed clearance on roadsides, signs needing straightening or the vegetation cut back around them, etc. If the job is too big for the Parish Steward, the Clerk will report it to Wiltshire Council through MyWiltshire on line reporting. Similarly, if you notice any street lights that are out, or blocked drains or anything else, please let the Clerk know so she can take it up with Wiltshire Council.

Wiltshire Electoral Boundary Review

The first draft of the recommendations for new electoral divisions, division boundaries and division names for Wiltshire has been published by the Local Government Boundary Commission England. A consultation period on these draft recommendations has now begun and will end on 15th April. The draft has made recommended changes to Seend's electoral boundary, as they have created a Seend, Poulshot and Potterne Division that includes the villages of Bulkington, Poulshot, Seend, Potterne, Erlestoke, Marston, Worton and Coulston. Seend Parish Council will discuss these possible changes at its next meeting and may submit a further comment, having responded to the first consultation last Autumn.

Any organisation or individual can submit a comment on these proposed changes. To find out more, please search on line for: <https://consultation.lgbce.org.uk>. An extract of the report that refers to Seend will be on the Parish Council website www.seendparishcouncil.co.uk

COMMUNITY-LED HOUSING IN SEEND

In March, each parish household will receive a Rural Housing Needs Survey. This had been initiated by the Seend Parish Council and the Seend Community Land and Asset Trust as part of the community-led housing project which will build affordable housing for parish people. This survey, which is more inclusive than the one conducted in 2016 as part of the Seend Neighbourhood Plan consultation process, is a pilot for the new Community-Led Housing Team at Wiltshire Council. Our 200-plus CLT members will already understand the importance of this survey for establishing both the scale and type of housing need in our parish, and opinion on what should be built for local people. The information will also update the Seend Neighbourhood Plan.

The survey, which will be delivered this month by Seend volunteers, will have a reply-paid envelope for return to Wiltshire Council.

If you would like some assistance with completing your Housing Needs Survey, officers from Wiltshire Council will be available to assist from 3pm - 7pm on Wednesday 10th and Wednesday 24th April at the Irene Usher Memorial Pavilion, Rusty Lane. White Horse Housing Association will also be available to offer assistance if you wish to register for housing using www.homes4wiltshire.co.uk on these dates. You can also register for discounted market housing on the www.homes4wiltshire.co.uk web site.

Steven Vaux
Seend CLT (828970) www.seendclt.org

SEEND PARISH NEIGHBOURHOOD PLAN STEERING GROUP

March Update

We creep out of winter into Spring 2019 with sustained ambition and determination to get our Neighbourhood Plan through the required stage of formal consultation and submitted to Wiltshire for examination. You helped us by attending the **Consultation Coffee Morning** for Parishioners on **Saturday January 26th in the Pavilion** and by giving us your views to create a good evidence base. It was well attended with 51 people coming in to find out more about the work we have been doing, and most seemed very engaged with the material on display. If you couldn't make it to the Coffee Morning, you will find the information available on our website. The Steering Group may find another opportunity to present the material again in the near future so watch for any news of that.

The attendees had an opportunity to view the full list and map of land known to be available for development, which is now also on our website (www.seendparishplan.org).

This item drew the most interest, as people were able to see the results of the preliminary assessments, which showed why some sites would be unsuitable for development. Those that may be suitable will progress to the next stage of assessment. The work on valued views, green spaces, non-designated village assets and the Conservation Area were also available for people to see.

Our Consultants, Place Studio, together with members of the Steering Group set up the exhibits and stayed with us all morning to help with any questions. If you use the website to view where we have got to and you have any comments, please do use the contacts page to let us have your thoughts.

It is worth repeating this request: as you consider the information on site assessment, please remember to think about it in relation to the whole Parish, not just whether any potential development might affect you personally.

A full summary of all the feedback we have received to date is available on the website and a few key points are summarised below:

- The Kennet and Avon Canal and its setting is a key asset that people are keen to see protected in the Plan.
- It was seen as important to identify *locally important* Heritage Assets across the whole parish in order to celebrate and protect them in the Neighbourhood Plan
- There were many comments on valued views, in particular views from both the Lye Field and the field beyond were highlighted as especially important both in terms of landscape and as an element of the Seend Conservation Area.
- There were also many comments related to Future Development in the Parish, providing useful insights with information about key views or setting, and posing challenging questions about the land known to be available which the Steering Group are assessing.

All are welcome at the monthly open meetings. The next Committee Meeting will be Thursday 28th March at 7.30pm. in the Community Centre. (Some members of the SG meet again between these open meetings to progress the background work, together with our Consultants).

Carola Thorpe on behalf of the S.P.N.P. Steering Group

CHURCH AND CHAPEL NEWS

The View from my window

Snow, snow, thick, thick snow. Did you enjoy it? I admit I did, from walking in it as it gently licked my face, to driving through the Pewsey Vale in glorious sunshine just before the thaw set in. Miles and miles, and waves and waves, a bit like the desert I suppose.

Aren't we lucky to live in an area which is so diverse and relatively speaking with such a gentle climate? But it's never far away these days, the problem of global warming and pollution. What do we do? I know we are all trying hard to find ways, from the proliferation of many coloured dustbins, to recyclable coffee cups, but we haven't found the answer yet.

It all seems a long way away from the world of the New Testament in the time of Jesus. There certainly wasn't any plastic back then, and burning fossil fuels wasn't a problem either, and as far as we know, global warming was unknown so we have to ask ourselves what would Jesus have said or done in response to this problem of our generation, after all he is a saviour for all time not just 2000 years ago.

Just recently we have been celebrating Candlemas, a lovely festival, where we remember that for some mysterious reason two special people, Simeon and Anna recognized Jesus as the Messiah, the light of the world - for both Jews and everyone else. We are all in it together. What did Simeon and Anna see that meant salvation for the world, and what can we see? Their hearts must have been full of wonder when they recognized him.

I think the first step for us is to wonder. Jesus loved to go out by himself, to the hills to pray and I'm sure the first thing he did was look around him and wonder at the beauty of the world and thank his heavenly father for it. We can do that. Next he prayed, Father forgive them, for they know not what they do. We can do that too. But next we can confess because now we do know what we are doing. Its too easy to say that other countries are worse than us. If we all try that little bit harder it will make a difference. We need help. We need to apply our minds to it; we need to support our scientists and our young people; we need to encourage those who produce so much plastic to think of ways in which it can become economically biodegradable. We need to work together, and we need to pray for guidance. One thing I am sure of is that Jesus would be horrified if he looked into the sea of Galilee and instead of seeing fish, he saw a whole mass of plastic. He would be horrified if,

on going up into a high place to pray, instead of clear air he saw a pea soup of smog. We are all aware of the problem, but its very easy to think it's someone else's problem. So, if you have enjoyed the purity of the snow, and if by now the spring flowers are beginning to shine gloriously in the sunshine, how about this Lent really trying to make a little personal difference. (After all the meaning of the word Lent is Spring) I for one want my grand children and their future grandchildren to be able to wake up on a winters morning and shriek with delight at the blanket of snow that meets their gaze, or the carpet of daffodils and buttercups to play in.

If you can, pray about it, and if you find that difficult, just think about this beautiful planet, and remember how uplifting it is to go out into the countryside , and thank whoever, whatever, and resolve to do your best to keep it beautiful.

Jane Knowles



CHURCH SERVICES IN MARCH 2019

The Parishes of Holy Cross, Seend, Christ Church, Bulkington and St. Peter's, Poulshot part of the Wellsprings Benefice

You are welcome to worship at any of the services in any of the churches in the Benefice.

Every Tuesday at 9.00am there are Morning Prayers at St Peter's Poulshot.

Every Thursday at 8:30am there are Morning Prayers at Christ Church Bulkington.

Sunday 3rd March 2019 (Sunday before Lent)

- 8.00 am Holy Communion (BCP) at Seend
- 9.15 am Parish Eucharist at Poulshot
- 11.00 am Morning Praise at Seend
- 6.00 pm Evening Prayer at Bulkington

Wednesday 6th March 2019 (Ash Wednesday)

- 7:30pm Cluster Service at Poulshot

Sunday 10th March 2019 (First Sunday of Lent)

- 9.15 am Parish Eucharist at Seend
- 11.00 am Parish Eucharist at Bulkington
- 6.00 pm Evensong at Poulshot

Sunday 17th March 2019 (Second Sunday of Lent)

- 8.00 am Holy Communion (BCP) at Seend
- 9.15 am Morning Praise at Bulkington
- 11.00 am Parish Eucharist at Poulshot
- 6.00 pm Evensong at Seend

Sunday 24th March 2019 (Third Sunday of Lent)

- 9.15 am Matins at Poulshot
- 11.00 am Parish Eucharist at Seend
- 6.00 pm Parish Eucharist at Bulkington

Sunday 31st March 2019 (Mothering Sunday, no Benefice service)

- 8am Holy Communion at Seend
- 9:15am Morning Praise for Mothering Sunday at Bulkington
- 11am Morning Praise for Mothering Sunday at Seend
- 11am Morning Praise for Mothering Sunday at Poulshot

From the registers

Funeral:

We commit to God's safekeeping;
Sheila Nixon whose funeral took place at Worton on 25th January.

Wellsprings Benefice

Mothering Sunday, 31st March 2019

Wellsprings Benefice warmly invites you to our Mothering Sunday Services for all ages on Sunday 31st March.

9:15 am Morning Praise for Mothering Sunday at Bulkington

11 am Morning Praise for Mothering Sunday at Poulshot

11 am Morning Praise for Mothering Sunday at Seend

There will be posies of flowers to give to someone who cared for you, to give away or to place in a garden of remembrance.

We extend a special welcome to everyone who would like to join us.

SEEND METHODIST CHURCH

Dear Friends,

Lent begins on the 6th March – it's a time for Christians to take stock of themselves and their faith and for centuries people have fasted, or in more modern times, given up things they like to eat or do, or taken up something good, as a way of focussing. Every time you decide *not* to eat that bit of chocolate or *to* do that good deed, is an opportunity to think of how you want to behave or change things in your life, or in your relationship with God.

We remember Jesus, at the start of his work on earth, spending 40 days in the desert, and the challenges he faced to live as God wanted rather than being tempted to live what many in human societies would call a successful life. He is tempted to solve his human desire for food, for excitement, for power in a supernatural way, rather than in practical ways that take into account God's will for *everyone* to live lives of abundance - and not just the powerful and those in the powerful groups in society.

People talk a lot about 'privilege' nowadays – the privilege held by those of us who have things naturally easy – in our society that is largely white people, men, those with enough money to be comfortable, those who are heterosexual and cisgender (those who identify with the gender we were assigned at birth). No human being has

a life with no complexities, but those of us in privileged groups do have it easier the majority of the time. Jesus had the ultimate privilege – he is God, he could have come as a Superhero – and yet he chose to become a Jewish man of no particular wealth or status in a time and place under Roman occupation. He did so in order to understand how it is to be one of us – and also to show us how God wants us to respond to and care for others. Superheroes are few and far between, but the rest of us can choose to show the undeserved and extravagant love and care for others that Jesus came to show us in our normal everyday lives.

In a sense, to stand back and not always use our privilege, to listen to the voices of those who have less power than we do and to give them the platform to speak that we always assume to be ours is acting superheroically . Jesus said that he came to earth that we might have life, and have it abundantly – all of us, without exception.

So that’s my challenge to you this Lent – be a superhero in Jesus’ image.

God bless
Wendy <>

Seend Methodist Church Services for March 2019

10th March Rev. Wendy Tucker - Chapel Anniversary and Villages Together

24th March Rev. David Coppard

Everyone always welcome, Les Warren.

BULKINGTON NEWS

BULKINGTON PARISH COUNCIL - VACANCY

Clerk and Responsible Financial Officer to Bulkington Parish Council

Bulkington is a small Parish with seven dynamic Councillors. The Council is looking for a Clerk and Responsible Finance Officer to assist with the important task of running and improving the Parish environment.

This is a part time, paid position. The work will be largely home based other than attendance at monthly Parish Council meetings on the third Wednesday of each month.

Briefly, the role involves setting the agenda in association with the Chair, taking the minutes of Parish Council Meetings, dealing with correspondence from Parishioners and Wiltshire Council and maintaining the Parish Council’s finances.

Training is available if required. Applicants require a basic background in administration and some experience of dealing with finances would be beneficial.

A full job description is available from Paul Bennett, Chair of the Parish Council, and potential applicants are also welcome to discuss the role with him on 01380 828374.

Applications can be submitted to the Chair Paul Bennett at
paulbborntorun@gmail.com or by mail to 7 Northfields, Bulkington,
Devizes SN10 1SE

BULKINGTON LADIES' GROUP

Our planning meeting in January was cancelled due to snow and ice. Our February meeting will be for planning and is on Thursday 28th. Our March meeting will be on Thursday 28th March in Bulkington Village hall at 7.30 p.m. There will be the usual light refreshments and raffle. Please contact Liz Futter 828485 nearer the time for further details.

Liz Futter 828485 Angela Read 828925

**All welcome to
THE TEA, CRAFT AND CHAT SOCIAL GROUP
for the Wellsprings Benefice**



We next meet from **2– 4pm** on Monday 4th March at Millcroft, the home of Neville and Thelma Boulton. New people are welcome to join us. Bring your own craft item or leave it at home and just come and chat!

EARLY WARNING!



The Great Bulkington

Railway will be open to the public on Easter Monday 22nd April from 1300 to 1630 hours when we will be pleased to offer rides to children and adults of all ages. Light refreshments will be served by the Ladies from Christ Church Bulkington. ***We take no expenses whatsoever and all profits from the railway will be sent to the Wiltshire Air Ambulance.***

Google 'The Great Bulkington Railway' for a video ride.

The railway and village hall may be hired for private birthday parties for £140. Contact Station Master Nev Boulton – nev.boulton@outlook.com.

**The Church-hosted Bulkington Village Lunch
takes place on**

Wednesday 6th March at 12.15pm at The Well.

Contact Phyl Yarde in advance for the menu (828116).

New people are always welcome to join us.

It is a good social event for the entire village and area.

Join Me For Lunch



The Mobile Library will visit the car-park of The Well in Bulkington on Monday 4th March, 11.05-11.30am. Please support this. It really could be a case of use it or lose it.



Benefice BUZZZZ Group

will meet on Wednesday 13th March at 3 pm

at the home of Paulette Bremner Milne at Bear Cottage, Poulshot, tel. 828527. Everyone is welcome to this informal and pleasant group, led by Rev. Jane Knowles.



SOUP LUNCH in BULKINGTON VILLAGE HALL

On Saturday 9th March from 12 noon 'til 1.30 p.m.

Come and enjoy home-made soup, cookies and tea/coffee for £6 adult, £3 child. To help with catering, please call Liz Futter 828485 and pay at the door. Proceeds to be shared with the Devizes Food Bank.

BULKINGTON "100 CLUB"

The February draw for the "100 Club" took place at the village lunch in The Well on Wednesday, 6th February, and the winners were :-

£40	No. 61	Rosie Forsey
£30	No. 02	Phyl Yarde
£20	No. 18	Edward Breach
£15	No. 36	Tom Suggitt
£10	No. 62	Joyce King



Congratulations to the winners!

Phyll Yarde

SEEND CLUBS AND ORGANISATIONS

SEEND SINGERS

Come and sing with us and lift your spirits



Do you like to sing? If you do, join The Seend Singers and enjoy singing even more. We sing a variety of songs and at the same time try to improve our voices and the way we communicate the music. It doesn't matter what standard you are. If you range from a 'bathroom bass' to a 'shower soprano' or if you are a more experienced singer, you'll be made welcome and we'll try to make sure you have a great and rewarding time.

There is no audition - just sing in tune. Don't worry if you've never sung in harmony, you'll get plenty of help and support.

We meet on Tuesdays at 10.15am in the Community Centre. Contact Bob McCulloch on 01380 828508 or robertianmac@gmail.com

SEEND COMMUNITY CENTRE

Don't forget that **membership subscriptions for Seend Club** are due by 1st April. Membership allows you to take advantage of cheaper drinks in the Members' lounge bar every evening (from 6pm on Fridays and from 7pm every other evening) free snooker on Mondays (16+ only) and discounted hiring rates. You can sign up at the bar.



See the events section at the beginning of this magazine and find us on facebook.
www.seendcommunitycentre.com – bookings 07703 814111.

THE ROYAL BRITISH LEGION **DATES TO REMEMBER**

Next Committee Meeting will be held in the Kennet Room in the Community Centre on Tuesday 9th April 2019, commencing at 1930 hrs, and **not** on 18th April as previously agreed. Further Meetings will be held on 27th June, and 10th October (this meeting will be preceded by the AGM).



Annual Concert. This will be given by The London Philharmonic Skiffle Orchestra on Saturday 28th September 2019 and will be held in the Community Centre. Further details will be published nearer the time. (Skiffle means Anything Goes!!)

Annual Lecture

This will take place in the Community Centre on Saturday 27th April 2019 commencing at 7.00 pm. It will be entitled "What Makes Putin Tick?" and will be given by Air Chief Marshal Sir John Cheshire KBE,CBE. Details will be published later.

Drumhead Service.

This will be held on the Lye Field on Sunday 30th June 2019 commencing at 1500hrs.

Roger Brind

100+ CLUB DRAW

The results of the Lye Field 100+ Club draw for January are as follows:-

£30.00	No. 006	Mrs C Springate
£25.00	No. 156	Mr C Hawkins
£20.00	No. 180	Ms Z McMillan
£15.00	No. 174	Mr N Pike
£10.00	No. 020	Mr M Park



Congratulations to all the winners. The new 100+ Club year starts on May 1st. Don't forget to fill in your application form and get it back to me!

Alison Bottomley
Seend Lye Field Committee

SEEND WI

February is almost an “in between time” with Christmas over and Spring yet to arrive (although the lovely drifts of snowdrops in the village are a delightful reminder of things to come). It was, therefore, an ideal time for W.I. members to host a Curry Night on 9th February, when there was a chance to taste and vote on various curries, followed by a quiz and raffle to round off the evening. This event was designed to be both an enjoyable social event and a fund raiser for our Centenary celebrations later this year.

Members also looked forward to hearing a talk entitled “Illegal Immigrants – non-native plants in our gardens” given by Frances Burroughs at our February meeting. The next Craft afternoon will be on Thursday 21st March 2 pm to 4pm in the Pavilion. You don’t have to be a member of the WI to take part.

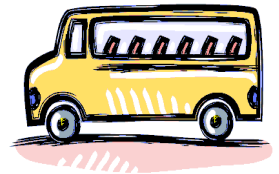
All meetings take place in the Pavilion, Rusty Lane, Seend at 7.30 p.m. on the second Wednesday of the month unless otherwise notified. For more information, please contact Joyce Harvey on 01380 828511 or check www.seendwi.weebly.com

SEEND SHUTTLE COMMUNITY BUS

Salisbury Shopping Shuttle

The shopping trip will be on Wednesday 6th March. Please call 01380 828757 by Monday 4th March to book a place. Thanks, Anita.

(The Shuttle’s scheduled services timetable can be found on www.seend.org.uk)



HISTORIC HOUSES CLUB, AGM

This was held on February 7th. Thank you to all who attended or sent their apologies. Thank you also to Anne Ewing who spoke to us about Swanage (London by the Sea), a truly delightful illustrated talk containing nuggets of surprising information.

The committee remains unchanged, as does the normal annual subscription of £4.

We have several visits lined up for this summer. These include Old Bowlsh Manor, The Vyne (NT), Avington Park near Winchester, Tallboys a local treat in Keevil. The village coach trip this year to Frogmore House, and also possibly a few alternatives.

Anyone interested in joining the club, and experiencing these delights please contact me Mary Warren 01225 707 357 or Len Murray 828513.



SEEND & DISTRICT RAMBLERS

February walk – due to slippery conditions underfoot it was decided to postpone. We look forward to completing the walk at a later date.

March 17th AGM – short walk in the Seend area will commence at 9.30am. We will return to the Community Centre for the AGM at 11.00am.

New members always welcome.

Lin Salter 01225 706451

SEEND SCHOOL NEWS



Our two netball teams recorded some more great results last night when they took part in the Melksham Schools netball tournament that was held at Melksham Oak. Our A team won and the B team came 6th overall. It is great to see their resilience paying off. Many of the children in the A team have been attending practice since they were in year 4 and during that time they have developed some great skills. It is very encouraging to know we have a B team with bags of potential and enthusiasm, and they will no doubt be equally as successful as they move up through the school.

The eco committee have had their first meeting with representation from staff, governors, parents and of course a hoard of willing and interested children. For the Bronze level, the committee must work on the first three steps which is form a committee, carry out a review of where the school currently is and draw up an action plan. Alongside this they need to set up a notice board to share their work. I have every confidence that these first three steps will quickly be completed so watch this space for news of their progress.

The children have thoroughly enjoyed a week of STEAM (Science, Technology, Engineering, Art and Maths) activities. Opportunities such as bridge building, weaving and coding have been relished – it was just unfortunate that the last day’s fun was cancelled due to the snow. Feedback from children and parents has been that it was thoroughly enjoyed which is great to hear.

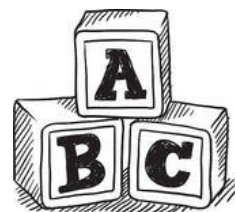
Week commencing 4th February was Children’s Mental Health Week (further details can be found at www.childrensmentalhealthweek.org.uk/about-the-week/). Having just had an activity week, we won’t be spending all week on this but we have arranged a few activities on the Monday including a workshop for KS2 from [The Art of Brilliance](#), some breathing exercises / calming techniques from Systema Coach Matt Hill for KS1 and Miss Slater will be running Yoga Sessions for all the children.

Well done to the three girls who organised the book sale for the animal rehabilitation charity The Little Zoo, in Farleigh Hungerford. A total of £32 was raised from the lunchtime and after school sales. This is a wonderful example of our value of Generosity, in action as well as respect for the environment. Not only have they raised money for a charity that is working hard to protect animals, they have also encouraged some recycling, so books that might otherwise have been thrown out have been given a new home.

Jackie Chalk
Headteacher

SEEND PLAYGROUP NEWS

Our topics this term: we are continuing with colours, and numbers 6-12. The children are enjoying bringing in toys in the colour we are doing each week. When we go for walks we look for colours and numbers in the environment. We welcomed Ruby to playgroup this term and hope she enjoys her time with us.



It is world book day on 7th March. We will be having our Easter Bonnet Parade on Friday 5th April at 10.30am. The children will be making their bonnets with their parents. Everyone is welcome to come along to our coffee morning after the parade. The 5th April is our last day of term.

We start again on Tuesday 23rd April.

Rose Dick (Playleader) 828003

SEEND PARISH COUNCIL

NB. The following minutes are a shortened version of the full minutes taken at the Parish Council meeting on 29th January 2019. These have not yet been ratified by the Parish Council and may be subject to change. A full copy of the minutes can be found on our website: www.seendparishcouncil.co.uk

The meeting held on 29th January was attended by 9 Councillors with Mr James in the Chair, Councillor Jonathon Seed and Mrs Sue Bond (Clerk). There was 1 apology, Mr B Nicholls. Also in attendance were: Mr G Clarke (Chairman of Seend CLT), Mr J Jenkison (Foresight Group), Mr C Powell (Woolley & Wallis Agents), Mr R Berry (Little Mitchells Farm), Ms C Dyer and Ms A Booth (representatives of New Buildings) and 13 other parishioners.

Local Councillor Matters - Councillor Seed said that there were 3 parish issues he was currently involved in. He had met with the prospective new owner of the Post Office and had seen his plans. He offered to help or advise on any matters of concern that the prospective new owner might have during the process of changeover.

Minutes and Matters Arising: The Minutes of the 27th November meeting were approved.

WW1 Bench – Mrs Heatley reported that the dedication service held on 12th January was well attended and had received a lot of publicity in the local press. **Councillor**

Vacancy – The Clerk reported that there were 3 residents interested in becoming a councillor. One, unfortunately had not yet lived in the village for more than a year, so could not yet qualify. It was agreed that a co-option should take place at the March meeting when Councillors would vote in one of the two candidates.

Items for Discussion from Members of the Parish - Ms Carole Dyer and Ms Alex Booth, spoke on behalf of the residents of New Buildings. They spoke of their grave concerns about the potential impact the development would have on their properties and the small community they have in the row of cottages. They urged the Parish Council to object to the development.

Application Ref: 18/12131/OUT - Site Location: Little Mitchells Farm, Seend Cleeve, SN12 6QD

Proposal: Outline Planning application for the erection of 10 new dwellings.

The Chairman reported that the Parish Council had received 10 letters of objection to the planning application to build 10 houses in a small estate in the field next to New Buildings. Mrs Heatley made the following comments about the planning application.

- The proposed site is in open countryside. New Buildings consists of a row of 12 terraced houses, one farmhouse and one farm bungalow in a lane with farmland and fields all around so this proposed development cannot be described as “infill” and would impose on the surrounding landscape.
- New Buildings houses are of historic interest – the houses are made of stone on a clay bed and have no foundations and were built for employees of the iron works. This new development would not be in keeping with those houses. They would be out of character for that area and would therefore have a detrimental impact on the visual amenity.
- The speed limit along this stretch of road is 60mph. With an increase in housing there would inevitably be an increase in the volume of traffic in an already fast, narrow lane. There is already a danger to walkers as there is no pavement and horse riders in this narrow road, and any increase in traffic would exacerbate that problem.
- There are no amenities. There are no pavements, hardly any lighting, the school and shop are in the main village of Seend, about a mile away and therefore this development would neither enhance this area nor be sustainable.
- The proposed development does not offer sufficient parking or turning circle. It is inevitable that the owners and their visitors will need more parking and waste collection areas and it is likely they will park outside the development on the roadside which is already happening with the residents of New Buildings. This, together with extra vehicles from the proposed development, will cause yet more hazards on this fast, narrow road. This would have an unacceptable impact on this country lane.
- Being in the countryside and near to the canal, this site will impact on existing wildlife including the likelihood of a bat colony, which is a protected species.
- The Wessex Water letter of 7th January 2019 should be carefully considered to include their concerns regarding the effects of inadequate provision for surface water drainage on sewer flooding and also the proximity of the sewage pumping station – a minimum clearance of 15 metres from the sewage pumping station to dwellings is required and some of the proposed houses are within that easement.
- Surface water and inadequate drainage is already a concern for New Building residents. Water can lie cross the road when there has been heavy rainfall precisely in the area where this development is proposed. This is even more of a problem as the houses are built on a bed of clay with no foundations.

Mrs A'Bear said the planning statement submitted with the application referred to the Draft Parish Neighbourhood Plan and policies that are now 18 months out of date, and have been superseded by new policies prepared by the NP consultants Place Studios. At the recent Consultation Coffee morning, the consultants had marked the site as code red, meaning that it is isolated, outside of the settlement area and would be car dependent. Therefore, it was not a good site for a housing development.

All the above concerns were endorsed by the other Councillors. Some Councillors said that development in Seend was inevitable and that it would be preferable to have a smaller development such as this one than one large development.

Mr George Clarke, Chairman of the Seend CLT, said that the CLT had dismissed it as a possible site as it did not have any social housing provision for it to be classed as an exception site. For an exception site to be approved by Wiltshire Council it would have to have the support of the whole community.

Resolution: Mrs Heatley proposed that the Parish Council objects to the planning application citing all of the above reasons. This was seconded by Mrs Vince. 6 Councillors voted in favour of objecting to the planning application and 3 Councillors abstained. There were no votes against.

Councillor Seed said that he would be willing to call in the planning application should the planning officer be minded to approve the application. He would speak to the planning officer to see what his views were and report back to the Parish Council.

Sandridge Solar Farm - The Chairman welcomed to the meeting Mr James Jenkison, Environment & Sustainability Manager for Foresight Group who are responsible for the management of the Sandridge Solar Farm. Foresight Group took over from the original builders of the solar farm, Goldbeck Solar, in February 2017. He spoke about their continuing work with the implementation of solar energy around country. Foresight Group are quite conservative in its ways and would not jump on the bandwagon of new technology until it was well and truly tested. He intimated that there would be the installation of shipping containers for battery storage on some of the sites which would be able to store larger amounts of power for delayed use. He stressed that the development would be around for a long time, and that the Community Benefit payments would continue to be paid to the surrounding communities. He was pleased to hear that Seend Parish Council had spent their money on the installation of 3 defibrillators in the parish.

Police Matters - The following incidents had been reported:

December

- 27th – Man from Bradford on Avon arrested for drink driving following a crash at the pinchpoint of Seend High Street, which severely damaged the railings.
- 29th – Non injury RTC, damage to property in Seend
- 29th – 2 local males arrested for possession of an offensive weapon.
- 30th - Man from Westbury arrested for drug driving after an incident at Baldham, Seend

January

- 19th – RTC involving 2 cars at Bell Hill Crossroads – serious damage was done to The Bell pub as one car was pushed into the pub by the other.

Neighbourhood Plan - Mrs A'Bear reported that the Consultation Coffee morning held on Saturday 26th January was well attended by over 50 people, many of whom gave feedback. They were now gathering up the feedback collected to give to the Consultants for analysis and inclusion in the Neighbourhood Plan. She said that they were hoping to be able to put up the Neighbourhood Plan display boards at other venues around the village, possibly in the pubs. The Schedule of sites was progressing with the first round of assessment narrowing down the number of possible sites to approximately 10. The next stage of assessment would look further into the suitability of the sites.

CLT Update - Mr Clarke, Chairman of the Seend Community Land Trust, said that it was just under a year since the Parish Council gave its formal backing to the setting up of a Community Land Trust for Seend. He gave a rundown of what had been achieved over the year. He was pleased to report that they now had over 200 members which is quite an achievement for a small CLT. He thanked those councillors who had regularly attended the monthly meetings. They had met with a number of landowners around the parish to discuss the potential for affordable & social housing development, and with one landowner in particular where discussions were progressing well. They had chosen White Horse Housing Association as the organisation to work with. Mr Clarke felt that there was a strong case for a second housing needs survey to be carried out in the parish. The CLT were concerned that the previous survey carried out in 2016 was now out of date and was not truly reflective as many parishioners were reluctant to give information. Mr Clarke said that the request for another housing survey needed to come from the Parish Council. Wiltshire Council would pay for the cost of the survey.

Resolution: The Chairman proposed that Seend Parish Council ask Wiltshire Council for another Housing Needs Survey to be carried out in Seend Parish. This was seconded by Mrs A'Bear. All Councillors voted unanimously in favour.

Highway Matters

Metro Count, Seend High Street – the Clerk reported that this was due to take place at the beginning of February. **Church Crossing** – The Councillors felt that more should be done to make the church crossing more visible. Councillors had expected the road to be painted, bollards and the special raised paving for people with impaired visibility. At the moment, drivers are not aware that there is a crossing, and have even parked over it. Councillor Seed advised that this matter should be taken up at the CATG meeting as an unfinished job.

Seend High Street Pinchpoint - following the accident on 27th December which badly damaged the railings and the wall opposite, there was a discussion on what else could be done to improve visibility at night. The footpath is quite narrow and pedestrians feel quite vulnerable at this point. It was agreed that the advice of the Highways Engineer be sought. **Bollands Hill Road Junction** - Since the road safety measures, the verge at the top of Bollands Hill has been churned up as drivers are cutting the corner and

going over the kerb. Councillors suggested that this issue be added to the feedback on the Bell Hill Crossroads improvement measures to give to Highways.

Planning Matters –

Application Ref: 19/00370/TCA - Seend Manor, High Street, Seend

Proposal – Yew Tree – Fell

All Councillors voted in favour.

Defibrillator at Sells Green - The Clerk reported that this was now installed and registered with WebNos and the South West Ambulance Service. A request had gone into Spotlight for a volunteer to do the weekly checks.

Correspondence - Emergency Flood Plan – the Clerk had received correspondence from Wiltshire CC Flood Resilience Officer asking for Seend Parish to prepare an Emergency Flood Plan. Whilst we do not have any flood risk areas, except in the surrounding fields, it is important that we identify any gullies/drains that if blocked in a flash flood had the potential to flood residential properties. The Clerk to prepare this with the help of the Councillors to identify flood risk sites.

CPRE – Best kept Village Competition 2019 - emailed correspondence received about this year's competition. The Parish Council to decide if we want to enter again.

Financial Matters

There were 11 cheques for signature.

Bank reconciliation to end of December - £25,189.48

The next Parish Council meetings are 26th March and 30th April 2019

NEWS FROM WILTSHIRE COUNCIL

March heralds spring and looking forward to Easter and by now the daffodils will have emerged and be in full bloom. However, there is also some emerging progress in the local and hopefully national political scene. Budget and Brexit have been looming large on our political horizon and by now both ought to have been put to bed. The Wiltshire Council Budget has emerged as a balanced budget with virtually no opposition after several months of hard work by Councillors and their officer teams. The almost total cross party support for this process means that Wiltshire Council has managed to make progress on its delivery of front line services at a time when other Councils are having very serious difficulty. This is largely because of the care with which finance has been managed by the Council over many years. So successful have the Council been in managing these finances that in the forthcoming financial year significant extra funding has been made available for road highways maintenance.

We have also had the first decisions from the Local Government Boundary Commission for England on their electoral review of the Wiltshire Council area. The good news is that they have accepted the all-party recommendation of Wiltshire Council to keep the number of Council seats the same at 98, albeit with more electors, and to keep most of the Area Board boundaries intact. The bad news is that there are some areas that the Commission have come up with ideas for change that

are not entirely logical. So it is worthwhile having a look at these plans and seeing whether they affect you and if so make a comment on the Consultation to committee@wiltshire.gov.uk by [19th April](#) when the consultation closes. Unconnected to this is the opening of a review of polling stations and polling districts. This review may well affect where you vote and whether your town or village retains its current polling station(s) so it is important to look at this and register your views in the consultation which closes [on 25th May](#). All the detail on this electoral stuff and how to comment in the consultations is easily accessed through the Wiltshire Council Website.

The Police and Crime Panel for Swindon and Wiltshire is there to hold the Police and Crime Commissioner to account but in particular to approve (or decline to approve) any proposed police precept increase. Recently the Panel was able to effect a change on the use of the proposed increase in precept. The Panel agreed that there were valid reasons for the increase, including an extra £2.25 million being passed on by central government for our local police area to pay in local police pensions. However as a member of the Panel I urged the Commissioner to provide more local police officers and the Commissioner agreed to the lobbying and is to provide 26 additional community police officers. This is local democracy at work and was achieved with strong representation by your Wiltshire Councillor and cross Party support.

With all this cross party cooperation in Wiltshire perhaps Parliament could learn a thing or two from the way our Councillors work together to deliver solutions for the Community we represent!

Jonathon Seed

SEEND SPORTING AND DRAMATIC NEWS

We are sad to say that our roving sports reporter, Frankie Goddard, is currently unwell and so there is no sports report this month. We understand that Colin and the Short Mat Bowls team have already inundated him with vast quantities of flowers and grapes but we are sure more such donations would be appreciated.



Get well soon, Frankie.

Please send items for the April edition to Frankie Goddard in the isolation ward or call 01380 828488 by 15th March.

(And don't forget the Mixed Pairs Skittles in the Community Centre on 9th March!)

BITS AND BOBS

The Seend Fund – Your local fund

Remember the Seend Fund is your local fund. Anyone living in or closely associated with Seend, including our close neighbours in Bulkington and Poulshot, can apply by emailing the secretary (anitashea@hotmail.co.uk) or writing to her at 34 Seend Cleeve, Melksham SN12 6PY. If you find yourself in financial difficulties the fund might be able to help with anything from school uniforms to heating bills. Don't hesitate to send details, saying how much you need, what it is for and when you need it by. Even if the fund has helped you before, your request will be sympathetically and confidentially considered. Although the fund is intended to help individuals, if there are any organisations or groups who need support to include someone with special needs in an educational activity, or who know of members who are struggling financially, the fund may be able to help.

STEEPLE ASHTON FILMS AT THE VILLAGE HALL, STEEPLE ASHTON THE CHILDREN ACT (12A)

SATURDAY 23rd MARCH 2019 – 7.30 PM

(DOORS OPEN AT 7 PM FOR REFRESHMENTS)



Based on the novel by Ian McEwan (you may remember Atonement) and directed by Richard Eyre, The Children Act is a compelling and powerful drama telling the story of Fiona Maye.

Fiona Maye (Emma Thompson) is an eminent High Court Judge presiding with wisdom and compassion over ethically complex cases of Family Law. She has paid a heavy personal price for her workload, and her marriage to Jack (Stanley Tucci) is at a breaking point. In this moment of personal crisis, Fiona is asked to rule on the case of Adam Henry (Fionn Whitehead), a brilliant boy who is suffering from leukemia. Adam's doctors want him to have a blood transfusion so that they can continue to treat him. As a Jehovah's Witness, he is refusing the transfusion on religious grounds. Adam is three months from his 18th birthday and still legally a child and the case has been referred to the High Court. Fiona Maye makes the unorthodox decision to visit Adam in hospital before making her judgement.

'Emma Thompson at her best. An amazing and very touching story of just how difficult life can be and the choices some High Court Judges have to make every day. Stanley Tucci puts in an amazing performance in the film as her husband. A must see film.' (An Audience Review)

Tickets £6 from Steeple Ashton Village Shop. Reservations can be made, please ring Alison Wilson on 01380 871345.



BANISH THOSE BREXIT BLUES!

Saturday 30th March is **possibly** the day after we will have left the EU, but it is **definitely** the day of Edington Arts' first concert of 2019, starting at 2.30 pm in Edington Priory Church. So why not join us for some light relief, lovely music and tea and cakes to finish?

The former Royal Harpist Claire Jones is returning by popular demand, and will be joined by her percussionist husband Chris Marshall who will be bringing a marimba and various kinds of small drums. They are a lively and talented pair, and together they will play a mix of classical and traditional music which will sound lovely in the church. Full details of the programme, which ranges from Bernstein and Vivaldi to folk and classical dances, are now up on www.edingtonarts.org/our-events.

Tickets are £20 front nave, £15 rear nave and £10 sides, and 18 and under come free. Get yours now by emailing sue@edingtonarts.org or by phoning Chrissy on 01380 831256.



Lavington Community Choir

If you would like to join us, there are no auditions and new members are always welcome. Just come along to Market Lavington Community Hall, 8 for 8.15pm every Thursday. Our new programme will include a Motown Medley and some Mozart.

For more information please contact Paula Boyagis, the musical director at pboyagis@gmail.com or Sue Ivey, committee member at sueivey3@aol.com

And finally

DATE FOR YOUR DIARY!!

Friday July 5th is our summer concert

Fairtrade Fortnight events in Devizes:

Fairtrade Coffee and Cakes Sunday 10th March 10.30 - 11 am at St James Church.



Tickets are now on sale for **White Horse Opera's Spring Concert** which will be in Devizes Town Hall on Friday 29th March at 7.30pm.

It will showcase pieces from our main opera *Carmen* and from our Tour G&S' *Mikado* amongst other operatic works.

We are delighted to welcome back guest tenor Sebastiano Cipolla who will no doubt treat us to some lovely solos.

Tickets £10 are available from Devizes Books 01380-725944 and www.ticketsource.co.uk/whitehorseopera

**Local community groups wanted for
Make a Friend, Be a Friend project**

Postcards have been sent out to households encouraging them to get in touch with Carers Support Wiltshire who are coordinating the project in partnership with Wiltshire Council. We need your details now so we can help provide a soft introduction for both parties and remove much of the fear when joining a new group of strangers. It's completely free and couldn't be easier to get involved – either complete a form now www.surveymonkey.co.uk/r/MFBFproject or contact Carers Support on 01380 819606.

**WORTON & MARSTON VILLAGE HALL - JUMBLE SALE
SATURDAY 16TH MARCH, 2PM TO 4PM. ENTRY – 50p
COME AND GRAB A BARGAIN!
ALL PROCEEDS TO VILLAGE HALL - Registered charity no: 248792**

Note to contributors:

Deadlines for Spotlight contributions for the rest of the year:

April edition	-	16 th March
May edition	-	13 th April
June edition	-	18 th May
July edition	-	15 th June
Aug/Sept edition	-	13 th July
October edition	-	14 th September
November edition	-	12 th October
Dec/Jan edition	-	16 th November

And Finally...

When I was a child I was made to walk the plank.
We couldn't afford a dog.



USEFUL CONTACTS: *Please tell Spotlight if your group's contact details change*

Church: Revd Ali Bridewell. 01380 739064. Revd Joshva John, 01380 828137. Benefice Administrator: Sarah Leckie 07938 270815. Churchwardens: Seend: Len Murray, 828513, Mrs Tina Yockney 827139; Bulkington: Mrs Liz Futter 828485, Mrs Anne Saywell 828931; LPAs: Jane Goman 827121, Liz Futter 828485, Rosie Forsey 828843, Len Murray 828513, Sue Noad 870343, Sue Rose 871665, Hilary Hutchings 828129, Tina Yockney 827139. Bell Tower Captain: L Murray 828513.

Irene Usher Memorial Hall (The Pavilion) Bookings - Richard Walker on 828250

Bulkington Village Hall - Nev Boulton 828101 or Roger Futter 828485

Seend Community Centre - 828796. Bookings: 07703 814111. Seendcommunitycentre.com

Seend Shuttle: Enquiries: seendshuttle@gmail.com or **Alison 07951 030491**

Seend Parish Council Clerk – Mrs Sue Bond 07706 850859 www.seendparishcouncil.co.uk

Seend's Wiltshire Councillor - Jonathon Seed 01380 850695 jonathon.seed@wiltshire.gov.uk

Seend Village Website: www.seend.org.uk – webmaster Neil Yockney 827139.

Seend School - 828334

Bulkington Website: www.bulkington.org.uk

Rights of Way Warden – Paul Millard, 01225 712821

Seend Fund: 01380 828757

MP Claire Perry, 01380 729358 (M-F 9.30am-1pm) claire.perry.mp@parliament.uk

MEP - Graham Watson 01458 252265. **Melksham Area Board** – 07917 721371

Police: PCSO Maggie Ledbury (Internal:101 Ext 77436089 or Mobile: 07471028939

100+Club Draw – Alison Bottomley - avbottomley@yahoo.co.uk

Book Clubs - the original: Sylvia Ewin 828325 - the other: Frank Teasdale 828617(+ Brewery)

Bouncy Club – Rebecca De Voogd 07840 382351

Cricket Club - John Wiltshire 07791 144248

Fawlty Players Panto Group - Tessa Doe 828617& find Seend Village Pantomime on facebook

Fete – Liam Bergin – liam@thirdberg.com or 07738 269739

Flower Show –Carole Vince 828579

FoSS (Friends of Seend School) Peter Kay, friendsofseendschool@gmail.com

Historic Houses Club - Mary Warren 01225707357 or Neil Yockney 827139

LINK Scheme - 075320 55560

Lye Field Committee – www.seendlyefield.org

Neighbourhood Watch - Brian Hunt (Seend) 828581; Cavan Moroney (Sells Green) 828606;

Owen Burton (Seend Cleeve) 828820; John Scott (Bulkington) 828026.

Preschool - Rose Dick (Playleader) 828003

Poetry Group - Tessa Doe 828617

Ramblers - Gerald Salter 01225 706451

Royal British Legion - Roger Brind 828830

Seend CLT – www.seendclt.org info@seendclt.org

Seend Singers - Bob McCulloch 828508

Short Mat Bowls Club - Colin Waldeck 828946

Table tennis – Chris Brooker, 828047

Tennis Club - Ric Ellinger 828687

Theatre Club - Sylvia Ewin 828325; Marion Whitehead 828612

WEA – Tessa Doe 828617

Wheelchairs to borrow - Sue and Graham Jones in Seend Cleeve, tel: 01380 828354

WI - Fiona Johnson on 828401 and Joyce Harvey 828511

Wine Circle – Steve Parsons 07974 347487 or Simon McManus 07896 711764

Seend Post Office & Village Store

01380 828250

NEWSPAPERS & MAGAZINES

FRESH FRUIT & VEGETABLES

WINES BEERS & SPIRITS

GROCERIES

THE HEALTH LOTTERY

POSTCARDS & STATIONERY



Opening hours:	Shop	PO
Mon	9-5.30	9-5.30
Tues	9-5.30	9-5.30
Weds	9-5.30	9-4.30*
Thurs	9-1.00	9-1.00
Fri	9-5.30	9-5.30
Sat	8.30-1.00	9-1.00
Sun	9-10.30	Closed
Bank Holidays	9-10.30	Closed

* note early closing