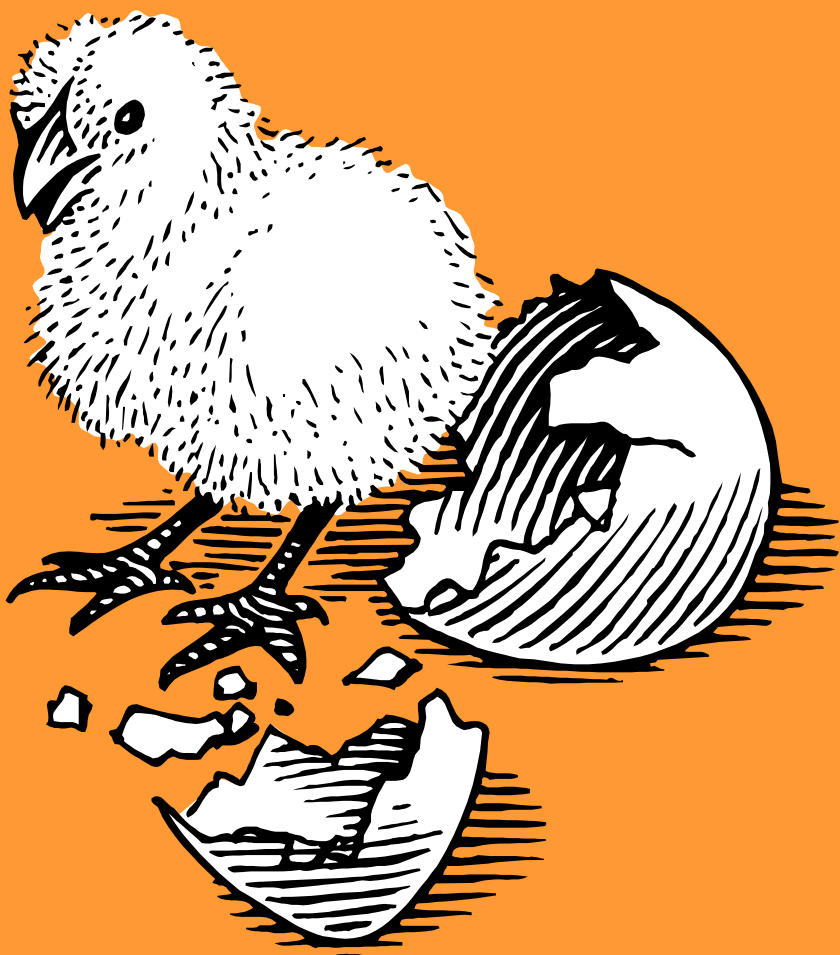


SPOTLIGHT

Seend & Bulkington



April 2011

DIARY DATES FOR LATE MARCH

- 29th Start of rescheduled Seend Head Public Enquiry, Community Centre, 10am
31st Cheese and wine evening at Seend School, 7pm

DIARY DATES FOR APRIL

- 2nd Melksham Choral Society, United Reform Church, 7.30pm
3rd Mothering Sunday family services, 9.30am Bulkington & 11.15am Seend
5th First Steps Service, Holy Cross, 2.15pm
5th Seend Acoustic Club - The Willbees, Community Centre, 8pm
6th Shuttle Shopping trip - ring Terry on 828203 by Monday 4th to book
11th Mobile Library: 9.35am Seend The Lye; 10am Seend Cleeve phone box;
10.55am Well Inn car park, Bulkington
13th Free Film Show for Seend Club members at the Community Centre, 8pm (tbc)
13th WI AGM and social evening, Pavilion, 7.30pm
14th Link AGM, Pavilion, 7.45 for 8pm
16th **LAST DAY FOR CONTRIBUTIONS TO MAY SPOTLIGHT**
16th Quiz Night, Community Centre, 7.45pm
17th Seend Ramblers meet Rusty Lane 9.30am
19th Seend Acoustic Club - Richard Digance, Community Centre, 8pm (advance tickets only)
23rd St George's Day Dinner, Community Centre
25th Mobile Library: 9.35am Seend The Lye; 10am Seend Cleeve phone box;
10.55am Well Inn car park, Bulkington
25th Great Bulkington Railway train rides, 1.30-4.30pm
26th Nosh & Natter lunch club, Community Centre, 12 for 12.30
26th Start of ongoing 3-a-side skittles competition in Community Centre, 8pm

DIARY DATES FOR MAY

- 3rd Seend Acoustic Club - Boo Hewerdine, Community Centre, 8pm
4th Shuttle Shopping trip - ring Terry on 828203 by Monday 2nd to book
7th Ian Keable Magic Shows: 3.30pm for children & 8pm for adults in the
Community Centre
9th Mobile Library: 9.35am Seend The Lye; 10am Seend Cleeve phone box;
10.55am Well Inn car park, Bulkington
10th Gardening Club evening walk at Lacock
14th Seend School May Fayre,
14th Strictly Seend Dancing, Community Centre, 7.30pm
21st-22nd Keevil Scarecrow Trail
24th Seend Shuttle AGM, 7.30pm Pavilion
28th Abba's Angels at Leaze Farm Bulkington

Newcomer to Seend?

Call in at the shop/PO and ask for your copy of the **Welcome booklet**, which tells you all you need to know about the village.

Visit www.seend.org.uk for past editions of Spotlight & 'Happenings!', local history, 'What's On', links to other village sites etc

Welcome to April Spotlight



Spring is well and truly here now, and with Joe's daffodils bobbing their pretty heads around the village I am sure you will agree it looks beautiful. We hope you are looking forward to this month with the Easter break, Easter eggs, Easter services and of course 'that wedding'. (No doubt there are a number of things planned to celebrate that day, but the only event we've been told about is that the Brewery Inn will be open from 10am, with breakfast baguettes, big-screen TV and an afternoon barbecue.) Whatever you are up to we hope you enjoy it.

There is plenty going on in the villages again in the coming weeks so take time to read through the magazine and see what is on offer. Have you taken up our New Year challenge to try something new this year yet?

After the National Census of last month, the Community Centre, in conjunction with several other bodies in the village, is planning an appraisal of community spaces and facilities. Look out for more details of this in the coming weeks.

Assuming planning permission is granted, the school is also looking forward to a new extension and improved facilities which will make the school a safer and more flexible environment for the children, enabling them to replace the old mobile classroom. They have to raise some of the funding themselves and we hope we can all find a way to support them in this endeavour. The school is a key part of our local community and needs our support at this time of change.

STOP PRESS! The result of the by-election for Seend Parish Council was: Tony Murch, 144 votes; Martin Wiltshire, 125 votes; Terry James, 64 votes. The turnout was 35.13%.

THE SPOTLIGHT CONTACTS

Contributions for the May issue (**copy deadline 16th April**) can be e-mailed to spotlight@seend.org.uk or delivered to Seend Post Office. Comments and queries to Joanna Goddard on 828488, Tessa Doe on 828617 or Anne Ewing on 828557. Juli Wilfort collects and types up the items deposited at Seend PO.

N.B. Anne and Tessa now share the editing of Spotlight, so please send all emails to the Spotlight address or deliver entries to the Shop/PO, rather than gamble on whose turn it is!

Lost emails: All too often, an email to Spotlight goes astray for no obvious reason. If email correspondents don't receive an acknowledgement by the end of the Monday after the Spotlight deadline, please ring Tessa or Anne (see above) to check if all is well. And please read the following:

N.B. When sending emails to spotlight@seend.org.uk please include the word SPOTLIGHT in uppercase as the first word of the Subject. This will help the editorial team sifting through all the messages stopped by the SPAM filter, which sometimes include genuine messages for SPOTLIGHT.

Letter from the Vicar

We have a busy month to look forward to this month, starting with our family-friendly services on 3rd April – Mothering Sunday. Traditionally a simnel cake was a gift to mothers on this day (which falls on the fourth Sunday of Lent and is sometimes known as “Refreshment Sunday”). This special cake is a rich fruitcake covered with a thick layer of marzipan, sometimes with an additional layer of marzipan baked into the middle of the cake. Eleven balls of marzipan are placed around the top to represent the eleven true disciples (excluding Judas).

Then, of course there are the other special services, including Palm Sunday, Maundy Thursday, Good Friday, a Celebration of Light on Easter Eve (at 6pm), all leading to Easter Day itself on 24th April. That day we will include an Easter egg hunt for the children. Details of all these services can be found elsewhere in this magazine.

The Easter story, including the events leading to the arrest and crucifixion of Jesus, is recorded by each of the Gospel writers. That story is at the very heart of Christianity. So what is that story? Well (briefly) on Good Friday, Jesus Christ was executed by crucifixion. His body was taken down from the cross, and buried in a cave. The tomb was guarded and an enormous stone was put over the entrance, so that no-one could steal the body.

The following Sunday morning (Easter Day), some women visited the grave and found that the stone had been moved, and that the tomb was empty. Jesus was seen that day, and for days afterwards by many people. His followers realised that God had raised Jesus from the dead. Jesus’s death and resurrection is at the very heart of the Christian faith and Christians believe that only through his death can people’s broken relationship with God be restored.

And so it is that on Easter day we commemorate the resurrection of Jesus Christ, which is why this is the most important Christian festival, and the one celebrated with the greatest joy. As expressions of that joy churches are filled with flowers, and special hymns and songs are sung.

If we engaged fully in the 40 days’ journey (Lent) leading to Easter we will have found it to be a hard one. It’s no wonder then that at the end of such a long period we are ready to join in the joy and the promise that Easter Day brings.

My prayer for you all is that you will know and share in that joy.

Happy Easter!

Renée

EVENTS IN LATE MARCH



Cheese & Wine evening in Seend School

7pm Thursday 31st March - all welcome

A chance to find out about the new building plans

EVENTS IN APRIL & MAY

(See also *Bulkington News* on pages 10-11)

QUIZ NIGHT

Saturday 16th April 7.45pm

in Seend Community Centre

Teams of 4 - £2 per head entry

Cash 1st prize & runners-up prizes & prize for best team name. Interval snacks, bar & raffle

Tel: 01380 828617 to book a table



St George's Day Dinner

Saturday 23rd April 7 for 7.30

3-course roast beef dinner - speeches - music



Tickets £16 from Peter Fisher 828305
Proceeds to the Community Centre

NOSH AND NATTER LUNCH CLUB

12 for 12.30pm

Tues 26th April & Weds 25th May

Advance booking essential

- please ring John and Lilian on 828540

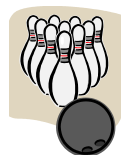


3-a-Side Skittles Competition

at Seend Community Centre

Starts 26th April at 8pm & continues into June

Entry forms are available at the bar
or talk to Russ Collins. All welcome!



Saturday May 7th in Seend Community Centre
Two Magical shows
 from award-winning Ian Keable

3.30pm 'Magic and Laughter Show' for children.
 Tickets £4 - family deal 4 for the price of 3!

8pm 'Nothing Up My Sleeve' Tickets £6.50
 or £5 for 12- to 15-yr-olds (not suitable for unde-12s)

Tickets for both shows available from
 Seend Shop/PO, Seend Community Centre
 or tel: 01380 828617



Seend and Steeple Ashton Guides invite you to an evening of....

Strictly Seend Dancing!

So.....Come along whether you can waltz or wiggle, jive or just jiggle!
 Join in the fun and possibly learn a few new things!!!!

Saturday 14th May
7.30pm
 Seend Community Centre
 Rusty Lane

Tickets £12.50 to include fabulous food & FCN

Available from:
 The Brewery Inn
 Seend Post Office
 Christine Glover 01225 - 705298
 Jackie Henshalls 01380 - 828171

Don't forget two important AGMs - Link on Thursday 14th April at 7.45pm in the Pavilion, and The Seend Shuttle on Tuesday 24th May , at 7.30pm in the Pavilion.



Saturday 21st May
7 for 7.30pm
in Seend Community Centre

Chinese Evening

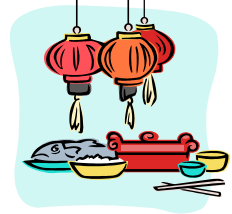
Buffet meal - film - music - calligraphy

Tickets (in advance only) £15

from Fiona (828401) Marion (828614)

or after 26th April from Seend PO

In aid of Community Centre funds



Seend Acoustic Club

1st & 3rd Tuesdays upstairs in Seend Community Centre

5th April - The Willbees - admission £3

(hosts of the Nova Scotia Folk Club in Bristol)

19th April - Richard Digance

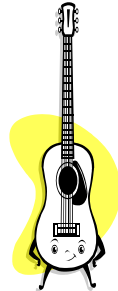
Admission £9 (advance ticket only)

3rd May - Boo Hewerdine - admission £8

(well-known songwriter, singer and guitarist)

8pm start or earlier to book a floor spot

See www.seendacoustic.org



ANNOUNCEMENTS

(Please let us know of any births, marriages, deaths, special birthdays, thanks etc that you would like to see included here.)

Barbara Booth 1921 - 2011

This is necessarily brief as it is what Barbara would wish, but her passing cannot go without some mention of her generous contributions to the community.

To many organisations, such as the Girl Guides, gardening club (her garden was her pride and joy) and links to the Church, Barbara gave continuously of her time and energy.

Those who knew her will remember her kindness and loyalty and fierce independence. She will be greatly missed.

A Big Thank you!

We must give our thanks to everyone who supported the Disco on 12th March at the Community Centre in aid of Breast Cancer and Dorothy House Hospice. It was a fantastic night and so far we have raised £630; there are still some outstanding donations at the time of going to press.



We must say a big thank you to the local pubs and businesses for their generous raffle donations:

The Barge; The Brewery; The Three Magpies; The Bell; Seend Post Office; Poulshot Farm Shop; Lovejoys Wholesale Foods; Sarah at Local Plants for Less in Seend Cleeve, plus many of our friends and neighbours who donated prizes.

Also big thanks to the few who always help us behind the scenes: Claire Smart, Tessa Taylor, Rose Dick, Debbie Duparcq, Dob Waylen, Trudy and Chris Waylen.

The people of Seend are brilliant! Thanks again for your support.

Barb Tilbury and Lou Waylen

VILLAGE NEWS IN THE DEVIZES GAZETTE

Unless anyone else comes forward to take over from Mary Hardstaff in providing Seend's input into the Community News pages of the Gazette, I shall do so for the time being. I know many people have missed this central focus for Seend news. Please let me have any information you want included by a week before publication.

Tessa Doe 01380 828617
tessadoe@hotmail.com

Churchyard railings

The iron railings in the churchyard round the Ludlow-Bruges vault and the Wragg vault have been restored. Welding repairs were the gift of R.H.Wiltshire Engineering of Loiterton. The paintwork was done by R.P.Waylen and funded by Seend Trust via the Community Centre. The Ludlow-Bruges vault is to the west of the church under the ancient yew. The Wragg vault is to the south west short of the recently felled lime.

Matthew Thorpe

MELKSHAM AREA BOARD GRANT FUNDING

Thanks to the Area Board for a generous contribution toward the cost of a new printer, which is much needed for 'Spotlight' and many other church and village organisation printing jobs. And thanks to Neil Yockney for all the hard work he put into the bid.

Seend has been doubly fortunate as the Board has also agreed to fund the cost of a projector for the Community Centre, which will be used for the free film shows for Seend Club Members and will also be available for use by other Centre users and hirers.

SECOND SEEND APPRAISAL

Many of you may remember the first Appraisal that took place in 1998. It was generally regarded as being a helpful way of gathering the views of the whole of our community and produced some helpful information for the organisations and for the Parish Council. New clubs and groups were formed as one of the consequences of the Appraisal.

The Community Centre Management Committee would like to consult with the community on a number of issues, but in pursuing these issues the Committee does not want to undermine the usage of the other organisations that have 'community spaces', or the revenue that this generates. Consequently it has invited all those organisations that have 'community spaces' to join with it in sending an appraisal document out to the whole community in June/July. A number of organisations have already confirmed that they would like to participate and others are considering the proposal. The Parish Council has also indicated that it would like to be part of this process. Each organisation will determine the nature and range of the questions that it wishes to consult the community on. The information gathered will help inform each organisation in their planning for the future and should help to improve the facilities for the benefit of the whole community.

It is expected that there will be an open meeting in September, when the findings of the appraisal will be presented.

There will be more information on the appraisal in the June edition of Spotlight.

Tony Murch
(on behalf of the Community Centre Management Committee)

SEEND FETE 2011

As I write this in the glorious spring sunshine it is hard to imagine that in only five short months the Seend Fete will be taking place! Please put the date **SATURDAY 13 AUGUST** in your diaries!



This is very much a day for everyone to enjoy and a way of meeting new people.

Preparations are well in hand and the committee has already booked the arena acts and entertainments – more on these next month!

The fete wouldn't happen without all the wonderful support and help that it receives from the community. We are always looking for new people to add to our list of willing volunteers so please give us a call if you can help on the day. (*See also Bernie's application form for the 100 Club, which includes the opportunity to volunteer for the fete. Ed.*) Also if you've ideas as to how we can improve the day we'd very much like to hear from you.

Now is the time for you to be thinking about organizing floats for the grand parade. The more the merrier!

Last year's fete was a great success in spite of the rain! And of course we're going to do even better this year, remember it is in aid of your community facilities! So please could you squirrel away any unwanted gifts, bottles, books, toys and bric-a-brac for the various stalls.

Fiona Johnson, Fete Chairman (828401)

CHURCH AND CHAPEL NEWS

Church Floodlights

23rd April - John and Jane Goman in celebration of St Georges Day

29th April - On the occasion of the Royal wedding. Also, a peal of bells will be rung on this day to celebrate the occasion. Our thanks to the bell ringers

The church will be floodlit during Easter week

[To make arrangements to have the church floodlit please contact Tina Yockney on 01380 827139. Suggested donation £10]

Church Services during April

Sun 3rd April Mothering Sunday

- 8.00 am Holy Communion at Seend
- 9.30 am All Age worship at Bulkington
- 9.30 am All Age Worship at Poulshot (in Hunloke Hall)
- 11.15 am All Age Worship at Seend

Sun 10th April

- 8.00 am Holy Communion at Seend
- 9.30 am Matins at Poulshot
- 11.15 am Parish Communion at Seend
- 6.00 pm Evensong at Bulkington (followed by APCM)

Sun 17th April Palm Sunday

- 8.00 am Holy Communion at Seend
- 9.30 am Parish Communion at Bulkington
- 9.30 am Parish Communion at Poulshot
- 11.15 am Parish Communion at Seend

Thurs 21st April Maundy Thursday

- 7.30 pm Benefice Communion at Seend

Fri 22nd April Good Friday

- 10.00 am Children's workshops at Seend
- 12.00 noon Benefice Meditation at the foot of the Cross at Bulkington

Sat 23rd April Easter Eve

- 6.00pm** Benefice Celebration of Light at Seend

Sun 24th April Easter Day

- 8.00 am Holy Communion at Seend
- 9.30 am Family Communion at Poulshot
- 11.00 am** Family Communion at Bulkington
- 11.15 am Family Communion at Seend

Easter Lilies



If you would like to commemorate a loved one by buying a lily for the church on Easter Day, please would you sign the list at the back of your church. The cost will be £2 each and the money can be given to a churchwarden or the Vicar, or posted through the Vicarage letterbox (preferably in an envelope, clearly marked with your name). Orders must be placed and paid for by 7 pm the previous Sunday (17th April) please.

THANK YOU

Our grateful thanks to Trevor Hale for dealing with the fallen tree in the churchyard so efficiently, and to Frankie Goddard and his team of helpers for organising the clearing and disposal of wood and chippings.

TY on behalf of the PCC



Children's Church events and activities **– past, present and future.**

Past – Messy Church in late January. A very popular (and oversubscribed) afternoon based around the creation story. Children made pipe cleaner bugs, earth balloons, cards and other treasures as well as the very popular 'primordial slime' which many enjoyed! The event finished with a hot meal for children and parents. A good time was had by all

Present – **Mothering Sunday** (3rd April) There will be a short, family friendly and informal service at Bulkington at 9.30am and Seend at 11.15am. Posies of flowers will be given. Children are invited to draw a picture of their Mum and bring it to show everyone.

Good Friday workshops (22nd April) in Holy Cross from 10.00-11.45am approx. Children (and parents) of all ages are invited to this ever popular event. There will be clay modelling, an Easter garden to make, cards, collage, as well as some new activities. The morning will end with Hot Cross buns and a drink. If you can play an instrument, please bring it along and help swell numbers in the Youth Orchestra. (Music available in advance- please ring Sue Taylor on 01225 709360)

Future – The next Messy Church event is planned for Friday 1st July in the Pavilion starting at 3.15pm. **ADVANCE BOOKING IS ESSENTIAL** as places are limited. There will be drinks & biscuits, craft activities, a story, and a meal for all. Put the date in your diary – now!

Seend Methodist Chapel Services for April

10 th April	10am	Revd Tom MacMeekin
24 th April	9:30 am*	Revd Roy Fowler will lead Easter Communion and Praise

(*please note the earlier time)

From Roy

“I am thirsty,” are Jesus’ words from the cross in John’s Gospel.

Thirst is a universal human urge. It prompts us to drink. We need water. Without it our bodies don’t function properly. We are more prone to infection; we become confused; vital organs shut down. Fortunately, for us, clean water is always to hand. For many that isn’t true. Water may need fetching from a distance or may not be clean.

‘I am thirsty.’ Our experience is Jesus experience. Three short words are John’s way of ensuring we realise that Jesus’ crucifixion is an authentic human experience for Jesus. The sun beats down on Jesus and he is soon de-hydrated. He asks for a drink. A sponge soaked in sour wine is pressed to his lips and he sucks a few precious drops of moisture into his dry mouth.

‘I am thirsty.’ John’s Gospel never shirks from expressing human need. Wine is needed for a wedding feast. Food is needed for a hungry crowd. A woman draws water for her family. The whole gospel is constructed around stories like these. The stories never play down the need or suggest it is not real. At the same time, they point beyond themselves to a less tangible need: the need of the human spirit to be refreshed in the times when life is breaking up and we are confused. However deep the well of our experience of want in the Spirit is, in the depths, God is still able to satisfy us.

“I am thirsty,” Jesus speaks from the cross. From the depths of his own experience, finding himself where we find ourselves, physically and spiritually in need, Jesus leads us to the water of life that flows from the heart of God.

God bless you all,



BULKINGTON NEWS

ABBA'S ANGELS



This popular tribute band has performed on the BBC and will be coming to

Leaze Farm, Bulkington, on Saturday, 28th May 2011 to take us through the whole ABBA repertoire.



They will be singing in the barn in the height of summer, on a bank holiday, in beautiful surroundings. A BBQ and licensed bar will be available.

Please come and have fun at what is sure to be a wonderful evening.

Further details regarding tickets etc will appear in May Spotlight.

Funds in aid of Christ Church, Bulkington.

Great Bulkington Railway Train Rides **Easter Monday 25th April**

The private miniature railway will be open for steam and 'diesel' powered train rides for adults and children of all ages on **April 25th from 1330 until 1630 hours**. Teas and 'sticky buns' will be served on the lawns or in the village hall depending on the weather.



We are located on the corner of Mill Lane in the village of Bulkington, near Seend next to the village hall – Everybody welcome.

There is a thousand feet of railway track, a 40 foot long tunnel and lots of workings signals. We have ride on carriages for our passengers and will be supported by the West Wiltshire Society of Model Engineers. Toilets are available in the Village Hall. Bargain stalls for the ladies on site!

Nev Boulton, Station Master
01380 828101

SEEND CLUBS AND ORGANISATIONS

SEEND AND DISTRICT GARDENING CLUB



On 8th March, Sue Carter, head gardener of Lacock Abbey Gardens talked to us about the history of the Abbey and the resultant changes in the gardens.

The Abbey itself was founded in 1232 and had all the necessary requirements for the life of self sufficiency led by the nuns. There was an orchard with beehives, room for vegetables and fruit, including a grapevine and the centre of the cloisters was a simple grass square for peaceful contemplation and prayer. Although not knocked about a bit by Henry VIII the continuation of the Abbey was discouraged and eventually the buildings changed hands and as the years passed were altered and added to. The church was removed but the cloisters left, a tower was built on one corner of the building (the subject of Fox-Talbot's first photo) and a formal Elizabethan garden added. Later in the 18th Century fashionable gothic features were added and the garden continued to change with fashion. Sue is now working with the garden as it is, adapting where necessary, working round features that can't be used as they were and encouraging the lovely Spring display of bulbs and utilising the new greenhouses provided by Harry Potter filming money.

The winners of the classes in our Spring Bulb Show were Jenni Raby-Cox, Tim Vince, Audrey Hill and Joyce Brand, some of them winning several classes.

GARDENING CLUB OUTINGS

Tuesday May 10th evening walk at Lacock Abbey and supper at the Red Lion. Deadline for returning slip, menu choice and money is the AGM on 12th April. Contact Sue with any queries. NB. You don't need to pay for your meal at The Red Lion after the Lacock walk until you have eaten it. I just require your menu choices with price for ordering purposes.

Saturday June 18th day trip to Sudely Castle and Batsford Arboretum. Deadline as above. Contact Jackie or Carole.

Thursday July 14th day trip to Mapperton and Tintinhull gardens. Leaflet will be circulated soon. Queries to Monica.

Next month, April 12th, is our AGM and social evening followed by a talk and demonstration on canalware with a chance to try yourself if time permits. Contributions of food will be welcomed even if you haven't yet signed the list. You won't need to eat before you come!

Sue.

SEEND SHUTTLE



A.G.M.

Everyone is welcome to attend our A.G.M. on Tuesday the 24th of May at 7.30pm in the Pavilion. Please put it in your diaries now, come along, have a say in the running of your community bus and enjoy a chat and refreshments. We hope to be able to update you on the hand over of ownership of the bus to the Parish Council so it should be an interesting meeting.

First Wednesday Shopping Trip

Don't forget to phone Terry on 828203 by Monday 4th April to book for the shopping trip on Wednesday 6th.

SEEND & DISTRICT RAMBLERS

On Sunday, 20th February, 19 walkers enjoyed a very pleasant and varied walk from Edington Priory, over fields along the Baynton Way into the delightful little village of Coulston with its splendid 13th century Church, passing through parkland beside Baynton House and making a steep ascent onto the old Salisbury to Bath coach road. This being the edge of Salisbury Plain there were spectacular views over the Wiltshire Countryside. A steady descent brought us back into the village of Edington. Our grateful thanks to both Brian and Geraldine for their efforts.



Next walk will be Sunday, 17th April

Meet in Rusty Lane for a 9.30am. departure. The walk will commence from the village hall car park in Monkton Farleigh, which is almost opposite the school, at

10am. The leaders for this 5 ½ mile walk will be Colin and Denise Noad (01225 852306). Their route will be taking us through Warleigh woods to the Dundas Aqueduct and up a steep hill into Conkwell and skirting the edge of Farleigh Wick. Bring refreshments.

Lin Salter

SEEND & BULKINGTON MOTHERS UNION

Thank you to the audience at Seend Pantomime on Saturday, 26th February. We raised £80 on the raffle. This will go to Mothers Union Charities: The Women's Shelter in Salisbury, the holiday fund for poor families, the Overseas Relief fund and the Literacy Funds.



First Steps

The Service for pre-school children and their parents will be on Tuesday, April 5th at 2.15pm. We shall be making a big picture of Jesus entering Jerusalem on Palm Sunday. Refreshments after the Service as usual.

CHRISTIAN AID WEEK

This year Christian Aid week is 15th – 20th May. Your envelope will be delivered with your May Spotlight, and collected sometime during the week. Seend raised nearly £1,000 last year. Will we beat that total this year?

If you can help as a collector please phone Margaret Coley 01380 828189.

SEEND COMMUNITY CENTRE NEWS

Club Membership

If you read this before 31st March – YOU CAN STILL SAVE £1 by paying your membership subscription before 1st April, when the special offer ends and membership returns to its full price of £8, or £5 for 14- to 17-year-olds or over 60s.

Film Shows: Subject to the arrival and installation of our super new projector (grant funded by Melksham Area Board) the long-promised free film shows **FOR CLUB MEMBERS ONLY** start on April 13th at 8pm with (by special request of existing Club members) **'Shaun of the Dead'**, the British low-budget spoof zombie movie which has quite a cult following. There will be a short film first, then an interval when refreshments will be available, then the main film. **You will need to show your membership card to be admitted.** Zombie costume optional!



The next show will be **'Mamma Mia'** on 15th May. Feel free to join in all the songs!



St George's Day Dinner

Unlike the patron saints of our Celtic neighbours, Saints David, Andrew and Patrick, St George never visited England...and I cannot trace any evidence of Dragons inhabiting our shores, or not those with fiery breath and nasty tails!

However, St. George and the symbol of a red cross on a white background have been adopted as the English patron Saint and national flag since the middle ages and our patron saint's day is celebrated on April 23rd each year. In Seend we reflect the pride in our heritage by celebrating this event with a dinner and some outstanding speakers. This year will again be no exception. All those attending will enjoy an excellent three course dinner based around the traditional main course of Roast Beef which will be followed by a talk by Col. Nick Borwell on his experiences during the recent war in the Balkans and a musical presentation by Michael and Fiona Johnson. Joe Hardstaff will again be the Master of Ceremonies and Robin Heatley will, amongst other comments, give the Vote of Thanks.

It will be another thoroughly enjoyable and stimulating event and one which puts Seend very much to the forefront of acknowledging what a great contribution that the English have made, and are still making, to so many worthwhile aspects of the development of the world as we know it.

Tickets are £16 per head and available from Peter Fisher, Tel. No. 828 305. Please book early as tickets are strictly limited.

The Big Lunch

We hope to host a gathering of picnickers (bring your own food) from 1-4pm on Sunday 5th June as part of the national 'Big Lunch' project (see www.thebiglunch.com). We'd welcome the support of other village organisations to make this a real community event. We've already got a promise from the Tennis Club of an afternoon of tennis fun after the picnic! Offers of support or other ideas to make it special to Tessa on 01380 828617 please.



Other coming events

See details on the early pages of this magazine – but briefly we have a Quiz Night on April 16th, the St George's Day Dinner on April 23rd, and 26th April is the next Nosh and Natter lunch, as well as the start of the 3-a-side skittles competition. Then on 7th May we have two unmissable magic and comedy shows from Ian Keable (a children's show at 3.30pm and an adult show at 8pm), Strictly Seend Dancing on 14th May, and an exciting Chinese evening, with buffet meal, film, music and calligraphy on 21st.

There are lots more events to look out for over the summer months, so keep reading your Spotlight and watch out for 'Happenings!' in May.

THE ROYAL BRITISH LEGION
THE DUGOUT SUPPER



Thanks to the hard work of the volunteers, an excellent cabaret, and the generosity of those attending, this was an unqualified success. Even though the numbers were slightly down on previous years (70 people attended), the profit with all bills paid was just over £500.00 and this will be donated to the Royal British Legion.

DATES TO NOTE

Please note the dates for the following meetings:

1. Next Committee Meeting Thursday 26th May 2011
2. AGM Wednesday 26th October 2011

SEEND & DISTRICT LINK SCHEME AGM

7.45 FOR 8 P.M. Thursday, 14th April 2011

in the Irene Usher Memorial Pavilion

Everyone welcome

NEIGHBOURHOOD WATCH

As a result of the item in last month's Spotlight by Owen Burton regarding the NHW Scheme, it is pleasing to report that a few people have come forward and declared an interest in re-starting the scheme in Seend. We now have the following co-ordinators who will act for the three main areas of the village:-

1. Seend Cleeve - Owen Burton. Tel. 07765774908.
email-wigglybus@yahoo.co.uk
2. Sells Green - Cavan Moroney. Tel.01380 828606.
email-cavanm833@gmail.com
3. Seend Village - Brian Hunt. Tel. 01380 828581/07771962103.
email-balh1942@yahoo.com

The Scheme is very successful in Melksham, and has been operating in this county for a number of years. It is about creating caring communities and bringing local people together in order to create a working partnership with the police and other agencies in order to become a two way flow of information. It is free to join and you can help reduce crime and the opportunity for it by just keeping a watchful eye on anything suspicious and watching out for your neighbours, particularly the elderly.

Please give some thought to joining the scheme. Regular crime bulletins, e-mails, and phone calls can only be circulated if you send your details to Owen, Cavan or myself.

Please watch out for the next NHW bulletin in next month's Spotlight.

Brian Hunt

SEEND FAWLTY PLAYERS' PANTO

Thanks to all who supported our little show. Audience participation was brilliant, and we've had lots of very positive comments. As usual, people seemed to enjoy the mistakes as well as the bits that went smoothly! If you missed it, you will shortly be able to see photos on the Seend website. We hope to be able to hand over several hundred pounds of proceeds to the British Heart Foundation soon – plus a small contribution to the new Spotlight printer.



SEEND WI

Wiltshire Wildlife's Dr J Austin gave us a fascinating insight into the rich bird life of Wiltshire at our last meeting in March.

Our next meeting takes place on Wednesday 13th April, which is our AGM combined with a social evening. The great news is that it looks like we have several people willing to come forward onto the committee and people who are willing to take over or continue with the main officer positions – so you are 'safe' to come along in the knowledge that you won't get nominated, unless you want to be!!!

Details of the 'social' are yet to be finalised, but rest assured it should be a fun night – so why not come and join us!

All meetings take place in the Pavilion, Rusty Lane, Seend at 7.30pm unless otherwise notified. For more information please check the website www.seendwi.weebly.com or contact Fiona Johnson on 01380 828401

THE 100+ CLUB (2011/12)



WHAT IS IT, AND WHY SHOULD I JOIN?

The 100+ Club: is a village lottery which was set up many years ago to raise funds to support the upkeep of the village-owned Lye Recreation Field and Pavilion. Last year – **2010/2011** - it raised **£1,172** for the Lye Field, **£970** in donations and **£202** in Gift-Aid payments.

Why you should join: principally to support the Lye Field, which together with the Pavilion is owned by the village – that means you and me - for the use and enjoyment of everyone in the community. The upkeep is managed by volunteers who give their time, expertise and labour free, but materials and equipment need to be paid for. Joining the **100+Club** is therefore a very good way to support a wonderful amenity, while at the same time giving yourself a sporting chance of recouping your stake – or even more! How often in life does this happen? Anyone can apply for a subscription, and you can buy as many subscriptions as you like – the more you have, the better your chances of winning, and the more support we receive. Membership runs from **May 1st** to **April 30th**.

How to join: membership costs **£15** per person per year, and is open to anybody in the village – or out of it; your money is just as good, no matter where you live! Application forms containing **Gift-aid certificates** are enclosed. Since **2002**,

membership has increased from **142** to a high of **202**, and in this period more than **160** members have won at least once, so you can see that the odds of winning are pretty high. Last year we reached **194** members, and this year we would like to exceed **200**, so make sure you **join our Club!**

Fete volunteers: it can't have escaped your notice that each year we have a village Fete – **13th August this year** - and each year we make an appeal for volunteers. There is a Fete sign-up slip included in the application form, so please take the opportunity to add your name to the list of helpers by completing the slip and returning it me. I will then pass it on to the Fete Committee. Last year more than 30 of you signed up to help out on the day, an absolutely wonderful response which assisted the Fete organisers immensely. The Seend Fete is a fantastically successful affair, but it does require a lot of support. Please think about providing some of it.

February and March 2011 draw results

The draw took place on Tuesday 15th March in the Irene Usher Hall following the Lye Field quarterly meeting. The numbers were drawn by members of the committee, and the results are as follows:

February 2011

1 st Prize	£35	65	Joe Hardstaff, MBE
2 nd Prize	£30	44	Neil Yockney
3 rd Prize	£25	203	Mrs Louise Proven
4 th Prize	£20	36	Les Warren
5 th Prize	£15	41	Mrs Mel Walker
6 th Prize	£10	12	Mrs Joyce Brand

March 2011

1 st Prize	£35	130	Richard Walker
2 nd Prize	£30	136	Richard Church
3 rd Prize	£25	125	Mike Manser
4 th Prize	£20	118	Leonard Murray
(hmm, this is a little embarrassing...)			
5 th Prize	£15	56	Bernie Prolze
6 th Prize	£10	74	Miss Lili Prolze

Bernie Prolze

Tel: 01380 828391; email: bjprolze@uko2.co.uk

SEEND PARISH COUNCIL

The meeting held on 25th January was attended by nine Councillors, with Vice-Chairman, Mrs T. Carr in the Chair. Apologies received from Mrs A. Heatley and Cllr J. Seed.

Casual vacancy on the Parish Council due to the resignation of Nick Haines:

Notices have been posted and application packs handed out to five people who have expressed an interest in standing for election. The date of the election has

been fixed for Thursday 24th March 2011. The Clerk would request that polling cards be sent to all parishioners. (*See editorial for election results. Ed.*)

Items for discussion from Members of the Parish

War Memorial refurbishment

Minerva Stone Conservation has been approached to provide an updated quote for refurbishment of the War Memorial. Seend PCC will be asked to approach the Diocese to ask for permission for the work to go ahead.

Old Wyatts – building works to Row Lane

A complaint has been received about the placing of cobbles at the base of the wall fronting Row Lane by Old Wyatts. This matter has been referred to Jonathon Seed, who has taken it up with Highways and we await their response.

c) Appeal against decision relating to proposed golf course, Berhills Lane

Notice of an appeal has been received. Residents living in Sells Green and along Berhills Lane reiterated their opposition to the development. The PC will respond to the appeal notice and amplify previous comments made in response to the planning application.

Appraisal of Seend's community spaces and meeting areas

Mr Tony Murch gave the background to a possible appraisal of Seend's current community spaces and meeting areas. It was 13 years since the last appraisal was undertaken; the purpose of the update is to discover the current requirements of villagers. (*See Mr Murch's item on p. 7. Ed.*) Mr Murch gave a timescale, with the appraisal to be ready by June, and an open village meeting held in September. Mr Diffey suggested that this is an opportunity to open up and broaden consultation and to deliver more opportunities for the village. Mr Murch said that it would broaden the scope of what is intended here but it could be done. The Chairman asked if any members of the PC would like to volunteer to take part Mr Diffey and Mrs Savage expressed an interest and Mr Manning said he would be happy to be a reserve. Mr Murch said that not all village organisations may want to take part.

Canal Bridge, Barge Inn – A letter has been received from Mark Stephens, Waterway Manager for Kennet and Avon Waterways, based in Devizes. He confirms that the last recorded inspection of the bridge took place on 21st Jan 2011, and no movements have been reported to the abutments and arch during the last year, whilst the parapet has shown movement of 2mm. Two more gauging points have been installed and these will be monitored on a monthly basis. BW to be asked if the PC can have copies of the maintenance reports, and to be advised that the PC has improved the parking by the canal entrance in Spout Lane.

Bus stop, Bath Road – The Clerk has requested Highways to replace the bus stop and improve the hard standing. Highways advise that they have no plans for improvement along this route, and so cannot install a bus shelter at this stop.

Planning matters

Appeal Granted

E/09/1241/LBC

Mr Julian Mattock, The Old Chapel, Seend
Cleeve

E/09/1241/FUL

Appeal granted against refusal of planning
permission for conversion of existing chapel to
residential use

The following applications were considered and **no objections raised**:

E/10/1259/CLE

Seend Row House, Row Lane
Use of buildings for an office, storage and
workshop and use of land as parking for vehicles
and machinery used in connection with the
business (application for a Certificate of
Lawfulness for an existing use)

E/10/1305/CLE

Seend Row House, Row Lane
Use of first floor of building as a domestic
dwelling (application for a Certificate of
Lawfulness for an existing use)

E/10/1309/CLE

Seend Row House, Row Lane
Use of part of existing farm for the purposes of
running Physiotherapy Consulting Room
(application for a Certificate of Lawfulness for an
existing use)

E/11/0108/TCA

Manor Field, High Street
The crown reduction of an alder buckthorn tree
by 30% because of overshadowing of apple trees
in the orchard

E/11/0109/FUL

Hillview Farm, Pelch Lane
Change of use of buildings and land from
agricultural to agricultural and/or equestrian

Whilst the PC had no objections to the change of use, there were concerns about
the use of the caravan for residential purposes. The Planning Enforcement
Officer to be asked to comment and advise.

E/11/0115/FUL

22 Seend Cleeve
Two storey side extension

E/11/0177/LBC

3 High Street
Installation of boiler and flue

E/11/0195/FUL

The Stables, Cleeve House, Trowbridge Road
Retrospective application for a change of use of
land from residential (C3 use class) to the storage
and sale of motor vehicles

E/11/0202/FUL

The Old Bakehouse, High Street
Erection of single garage

Mrs Rosemary Fisher, Clerk
www.seendparishcouncil.co.uk

SEEND SCHOOL NEWS



The hard work for the fundraising has begun, with the cheese 'n' wine on 31st March. It will be a huge achievement to raise this money and we are grateful to any individuals and local organisations/businesses for any help they give with donations of time, resources or money. We can't wait to show off the end result with a grand open day where everyone will be invited to see the improvements and what everyone's efforts have achieved.

The PSC is planning a bigger and better May Fayre this year on May 14th from 2pm – 6pm so we very much hope you can attend as there will be something for everyone there.

As always we are not just interested in raising money for ourselves. We have recently helped Barnardos raise £140, Comic Relief £100 and most recently have supported the Melksham Rotary Club's Polio campaign where every 20p pays for a vaccine that will protect a child from polio.

Holly Class (5 year-olds) have enjoyed a couple of walks around the village and are looking forward to their forthcoming visit to Lackham to see the new born lambs.

The children in Oak Class (6 -7 year-olds) enjoyed a trip to Sevington School on March 23rd where they had a Victorian experience. They found out what it was like to be a child at school in Victorian times and went dressed for the part too. Luckily they were all on their best behaviour so the cane was not needed!

Chestnut Class (8 and 9 year olds) had a visitor explaining what life is like for people in the Gambia. The children were able to explore some artefacts and look at film footage and photos to help them compare life there with life here.

Many thanks must go to P. M. Bines, a Stonemason in Broughton Gifford, who has very generously sponsored a school tracksuit for our sports' team. We are looking forward to the first occasion to wear this which should be in our forthcoming friendly football match against Keevil School.

Jackie Chalk, Headteacher

Seend School Parent Social Club

Textile Collection

We would like to thank everybody who has cleared out their cupboards and donated textiles to the School in order to raise funds. Altogether **Bag2School** has given £320 to the school, so thank you. A further collection has been organised for the end of the year.

PTA Needs New Members

Later this year we will be losing several members of the PTA as their children move onto secondary school. If you are an existing parent or if your child is starting school this year, join us plan fundraising events. **Please become involved, new ideas are always welcome.** What would *you* like to see us do? We generally meet once a month so why not come and speak to any of us or come along to our next meeting.

May Fayre – Saturday May 14th

Please put this date in your diary. This is our second biggest fund raising event of the year, after the Christmas Fayre. There will be something for everyone - refreshments, tombola, splat the rat, games, stalls etc. More details will follow in the next edition of the Spotlight. Everyone is more than welcome.

Seend School 100 Club

There were no winners this month as we do not have enough new and renewed members. Please become a friend of the school, anyone can do it, whether they have a connection to the school or not. The odds of winning are better than the lottery, so please join by picking up a form from school or contacting me. Cheques need to be made payable to Seend School 100 Club.

For your chance to win, all we ask is that you pay £12 a year and each month you will have the opportunity to win a share of £45. First Prize is £20, 2nd Prize is £15 and 3rd Prize is £10. The winning tickets are drawn during Gold Book Assembly. The winners will be published in the Spotlight. Best of luck and thank you!!

Parachute Jump – 25th June 2011

Mrs Jo Bines, has bravely agreed to do a parachute jump in aid of the school. Jo is not keen on heights so this is very brave of her!! She is paying the £250 to do this out of her own pocket, so all money raised goes to the school.

Sponsorship forms will be available around the village and at school. Any donations can be dropped into school, marked parachute jump.

Emma Smith 01380 828056

FRIENDS OF KEEVIL SCHOOL

A huge thank you to all those who contributed to the textile recycling campaign during March; we will let you know how much was raised just as soon as we have the final total.

With the majority of April being taken up with the Easter Holiday we are now looking forward to May where the big event will be the Keevil Scarecrow Trail. This popular event is planned for the 21st and 22nd of May. The theme this year is going to be Pop Groups /Popstars and Heroes and Villains. There will be a barbecue, ice creams, teas and coffees, and activities for the children. Please pencil the dates in your diaries. We will also be looking for donations of cakes, and plants (so please plant some extra seedlings for us).

If anyone from the villages is interested in making a scarecrow, this would be very welcome, please contact Catherine Cosgrove T:01380 871032

Many thanks!
Rachel Harvey

SEEND SPORTS RESULTS AND FIXTURES

Football

Manager Mike Hopkins

Assistants Mark Newman and Ben Grinham



Seend are presently second in the league, only three points behind Foresters with four matches to play so another championship is still possible.

Results:-

Blue circle – lost 1-3 a reverse of last month’s fixture

Semington Magpies – won 3-1

Steeple Ashton – drew 4-4

Top scorer is still Ralph Plummer. Mark’s goal of the month award goes to Mike Hopkins for his left footed volley from the edge of the area in last Saturday’s Steeple Ashton match.

Tennis – chair Elaine Davis



The league matches are only a few weeks away. We should have a list of the fixtures out by the end of the month. Sunday morning practice sessions organised by Ric are going well. All are welcome. They take place on the club tennis courts from 10am to 12 noon

Short Mat Bowls –Sommelier – Colin Waldeck

Newcomers to the village have traditionally asked me where the local social scene is at and I have of course, to date, pointed them in the direction of the SMB entertainments secretary. In the last few months alone I have enjoyed the SMB AGM party, their Christmas dinner, the valentine night masquerade, the Bolland’s hill bobsleigh evening fireworks display and Ceilidh....the list is endless and this month I thought that they had come up trumps yet again with their novel “blind” wine tasting. Colin, whose facebook entry describes him as a “virtual master of wine”, arranged for a “lavish array of palate-teasing vintages” for those who had forked out the “reasonable” £150 per head. The need for a blindfold I now understand. I have to confess to letting the same slip revealing that all the bottles appeared to have been brewed in Colin’s greenhouse! His rhubarb special was described in the notes as “showing better than it did from the cask, this soft generous dark ruby-purple tinged 2009 exhibits sweet black currant fruit intertwined with walnut, roasted pine nuts and subtle smoke, and at £35.99 a bottle it is a snip.” I beg to differ, as indeed do those who operated the



stomach pump at Trowbridge A & E. Could I please have my money returned and no Colin I will not accept in lieu a mixed case of your great aunt's vintage gooseberry concoctions even if you do describe them as "modern day clones of her quintessentially majestic 1947!"

Incidentally this month's results were as follows:-

Won against Bromham 8-0 away

Won against Melksham & Shaw at home 6-2

Drew with Marshfield at home 4-4

The team are now 2nd in their division and will play in the League Finals.

SKITTLES

Results for the 3 men's Seend teams in the Melksham and District skittles league.

Seend A – captain John Wiltshire

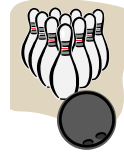
Vs Saracens – won 6-1

Vs Avon A – won 7-0

Vs Cons C – lost 2-5

Vs Holt Slick 50's – won 5-2

Vs Avon C – lost 6-1



John Sainsbury is top of the averages having recently scored a sensational 43.

Seend B – Captain Nick Easton

It has been a bad month for the B team but let's hope that there will be a revival before the end of the season

Vs The Pilot – lost 2-5

Vs The Animals – lost 1-6

Vs Melksham Sports – lost 1-6

VS Semington A – lost 1.5-5.5

Vs Staverton B – lost 2-5

Steve Tucker tops the averages and Mike Haines has the highest individual match score this season with a tremendous 43

Seend C – Captain Graham Hamblin

The tide has turned! – the team has won 4 of the last 5 matches:

Vs Semington B – won 6-1

Top scorer Danny Brophey with 29

Vs The Good, Bad and Ugly – lost 1-6

Top scorer Glenn Smart with 26

Vs Cons A – won 6-1

Top Scorer Harry Waylen with 31

Vs The Drifters – won 5-2

Top scorer Nathan Hamblin with 31

Results fixtures and news for May Spotlight to the Dubious Goals Committee by 12th April please. Frankie Goddard 828488.

PERSONAL ADS

(Small personal ads - not from businesses - can be left at the Post Office or delivered to Tessa Doe at 6 New Buildings with payment of £2 please.)

Wanted

Grazing - Seend Cleeve or surrounding area - to lease with view to purchase. We are looking for an area of grazing which we can fence securely to make a safe haven for our ponies and their feed / water following numerous incidents of theft and now criminal damage at our current location. Anything considered, although 5 acres plus preferred. . We are happy to include uplift clauses etc to alleviate any concerns regarding development etc if required.

Please contact us at 108 Seend Cleeve or on 07885 103071 without any obligation at this stage. Thank you S & J Wilfort.

ODDS AND ENDS

Summer Visitors

House Martins: These lovely migrant birds fly from Africa to nest in the British Isles, many in our area. They spend a long time making their mud nests under the eaves of houses. Please be tolerant of their building habits. The birds do not cause too much mess and they become distressed if all their hard work is destroyed. If house martins cannot raise their brood, yet another species will be endangered.



Swallows: Always return to their old nest sites, so please make access to them. If for security, access has to be shut, swallows will fly through small openings in order to reach their traditional nesting sites.

Swifts: Their nesting sites, some of which are centuries old, are fast disappearing. They require an access tunnel of at least 18" long with a small entrance hole; please don't block them off. Swifts are believed to spend as much as nine months a year on the wing and are known to nap whilst flying.

Should you require any advice about these birds or how to obtain artificial nesting boxes and how to erect them, please contact Wildlife Trust Wiltshire. Tel: 01380 725670.

These birds are, of course, protected species. It is an offence to disturb or destroy their nest sites and environments.

WALK TEN for Marie Curie Cancer Care

You can register now for a 10km twilight sponsored walk around Stourhead on Saturday 3rd September. Phone 01884 703536 for an application form or visit www.mariecurie.org.uk/walkten

Melksham Choral Society Spring Concert



If, like us, you think that Faure's Requiem is one of the most beautiful pieces of music, do come to our concert on Saturday 2nd April at 7.30pm in the United Reform Church, Melksham. You can enjoy a whole evening of Faure with the Requiem, Madrigal, Pavane, Les Djinns, Cantique de Jean Racine and the 'Dolly Suite' piano duet played by our fabulous international pianist Maria Angel Garcia and her husband Tom Worley our musical director. Tickets are £10 (accompanied children free) from Anita Shea (01380 828757) or Melksham Tourist Information.

Wiltshire Council News

Proposed changes to bus services in Melksham area

As a result of significant reductions in local authority funding, and the Government's insistence that a high proportion of the savings are achieved in the first year, Wiltshire Council has had to make difficult decisions in setting its budget for the 2011/12 financial year. However, due to efficiency and procurement savings of £850,000 and the use of additional income from car parking to help fund bus services, it has been possible to limit to £600,000 the amount that has to be found from making changes to bus services.

The main changes affecting the Melksham Community Area are;

- Withdrawal of Sunday evening services after 6.30 pm on service 272 (Bath – Box – Melksham – Devizes)
- Reduction in the frequency of the ZigZag service (Trowbridge – Bradford – Melksham – Corsham – Chippenham) to two-hourly
- Withdrawal of service X76 which provides a daily shoppers bus from Marlborough to Bath, via Calne, Melksham and Kingsdown
- Withdrawal of service X88 which provides a Wednesday and Saturday only shoppers bus from Chitterne to Bath, via Bratton, Steeple Ashton and Hilperton
- Withdrawal of the one journey in each direction that runs after 7pm between Devizes and Trowbridge on service 49

We want to give communities the opportunity to respond if they are aware of particular difficulties that will result. It may be possible in some cases to fund a limited alternative service, or to help local people develop community transport solutions. A letter has been sent to all town and parish councils explaining the proposed changes, and asking for feedback. Responses are requested by 1 May. Replies should be sent to ian.white@wiltshire.gov.uk in the Council's Passenger Transport Unit.

Energy Monitor Project

New energy monitors will be available to hire for free in all libraries from Monday April 4th 2011. Each monitor will be available to hire for free for a period of 3 weeks. We have developed a support booklet to be given out with

each hire that can be kept for future reference. The booklet is full colour and packed with simple to follow instructions, advice on energy saving, energy saving products and the information on grants and funding. The booklet has been designed to help the user get the most from the loan of the energy monitor and help the simply realise savings from their energy bills.



Bowood Charity Dog Show and Summer Fair

Sunday June 12th from 10am

At Bowood House Calne SN11 0LZ

The BEST day out for you and your dog!

www.bowood.org/dogshow

SPRING SPONSORED RIDE Sunday 8th May

IN AID OF KENNET VALLEY DRIVING GROUP RDA

(Riding for the Disabled) Registered Charity No. 1074356

CROSS COUNTRY AND ORIENTEERING COURSES

Schedules and entry forms from: Mrs V Hemery

01672861676/ vhemery@hotmail.com

Devizes Area Committee

CANCER RESEARCH UK

COUNTRY HOUSE CAR BOOT SALE

The local committee of Cancer Research UK are once again holding an upmarket Country House Car Boot Sale at Manor Farm, Stert (off A342) following the resounding success of the 2010 event. It will be held on Saturday 21st May. Entry for buyers costs £5 per car and the event will run all morning from 08.30 hrs.

A pitch costs £25 for any vehicle and must be pre-booked and pre-paid. For further details visit www.devizescruk or call 07831 376688.



West Wilts Fly Fishers Guild

MEETINGS ARE ON THE SECOND WEDNESDAY OF THE MONTH AT A COMFORTABLE LOCAL VENUE where we normally have guest **SPEAKERS** or other organised activities.

For further information please contact : Membership Secretary,
WWFFG, Mr. Andy Moore, 79 Combe Park, Bath, Somerset
BA1 3NE or E-Mail: amoore@stewartdesign.co.uk

Sponsored 10 mile midnight walk for Salisbury Hospice on 4th June

Call 01722 416353 or email info@salisburyhospicecare.co.uk

Refurbiz - the Domestic Appliance Recycling Charity

Refurbished appliances at affordable prices with warranty

Replacing your washing machine, dryer, fridge or electric cooker? Please donate your old machines to us so we can refurbish them for families in need.

Wiltshire-wide collection and delivery service.

Call us on (01380) 720200,

Or visit our showroom at Hopton Park, Devizes

www.refurbiz.org

Registered Charity Number 1107150

The following item was sent in by a specialist local company, and includes their contact details. However, we are printing it as it offers several useful pieces of information - but we would point out that other such service providers are also available!

Climate of change



Resources and energy are being stretched across the planet and in the home. Many home owners are facing rising energy prices, and security of supply is being called into question.

Reducing our energy consumption reduces our dependence on fossil fuels individually, and as a nation. It does not mean switching everything off, and can make your home more comfortable – not less.

Here are a couple of no cost tips for cutting your heating bill.

How your boiler is controlled can have a significant impact on the amount of fuel you use. Your boiler probably has a time clock, which turns it off automatically when it is not required. A seven day digital programmer gives you the more control than a 24 hour mechanical time clock. Many boilers can have controls upgraded without replacing the whole boiler. Heating demands change over the heating season, during the spring the boiler does not need to turn on so early in the morning as the house will take a shorter time to warm up. Energy can be saved by delaying the time at which the boiler comes on every morning and turning it off earlier at night.

Do you have Thermostatic Radiator Valves (TRVs) on your radiators (a dial on the pipe)? TRVs are thermostats, not power knobs. Set them, then leave them. A high setting won't make your house warm up faster, and leaving them on higher than necessary wastes energy. Try setting each to 3 – if after a few days you find a particular room is too cold, turn it up half a point, and give it another day or two to see how it goes.

If you would like an to find out where you can save energy and money in your home visit www.greengaugebuildingenergy.co.uk or call 07764939718 or 07709170008 for an energy survey quotation.

More dates for your diary

June 5 th	'The Big Lunch' community picnic - to be confirmed
June 11/12th	Seend Open Gardens weekend
June 18 th	Gardening Club outing to Gloucestershire
June 18th	Seend Scouts & Guides reunion
June 26th	Historic Houses Club outing to Tyntesfield
July 1st	'Messy Church' in the Pavilion
July 2 nd	Second Seend Summer Ball
July 9 th	Annual Fuchsia Show
July 14th	Gardening Club outing to Dorset
July 16 th	Start of Summer Saturday Breakfasts
July 17th	Historic Houses Club outing to Woodchester
August 13 th	Seend Fete and Flower Show
August 21st	Historic Houses Club outing to No 1 Royal Crescent
Sept 9 th	Dance for Church funds with 'Dogs Without Collars'
Sept 10 th	Seend Acoustic Music Festival (phone 01380 827041)
Oct 8 th	Royal British Legion Lecture
Oct 10 th	Start of WEA classes on 'The Naughty Nineties'
Oct 15 th	11 th Seend Beer Festival
Nov 26 th	Seend Wine and Food Fair

And finally.....

A gardening quote, as it's that time of year....

"My neighbour asked if he could use my lawnmower and I told him of course he could, so long as he didn't take it out of my garden."

Eric Morecambe



USEFUL CONTACTS: *(contact Spotlight if your group's contact details change)*

CHURCH: Vicar: Rev Renée Coulson 01380 827285; Benefice Administrator: Mrs Sue Taylor 01380 828733. Churchwardens: Holy Cross Seend; S Taylor 01225 709360 Mrs Tina Yockney 827139; Christ Church Bulkington: Mrs Liz Futter 828485 Mrs Anne Saywell 828931; St Peter's Poulshot: Mrs Janet James - 724944 Mrs Paulette Bremner Milne 828527; LPA's: Mrs Audrey McDonald 828376 and Mrs Liz Futter 828485; Bell Ringers: C Mayell 828627

Minister Methodist Church - Revd Roy Fowler - 01249 813340

Irene Usher Memorial Hall (The Pavilion) Bookings - Richard Walker on 828250

Bulkington Village Hall - Nev Boulton 828101 or Roger Futter 828485

Seend Community Centre & Club - 828796 (bar opening times only i.e. 7.30-11pm)

Hall and meeting room bookings: Frank Teasdale 828617

Seend School - 828334

Seend Shuttle Community Bus: Private hire bookings - Alison Cobbing 828568

Seend Parish Council Clerk - Rosemary Fisher 828281

Seend's Wiltshire Councillor - Mr Jonathan Seed 01380 850696

Seend Website: www.seend.org.uk - Neil Yockney 827139

Bulkington Website: www.westwilts-communityweb.com/site/Bulkington

Public Footpath Warden - Mrs Esther Daly 01672 513157

Connect 2 (transport to RUH; book at least one day ahead) - 08456 525255

Community Beat Manager for Seend PC Emily Thomas. She can be contacted on

0845 408 7000, or e-mail melkshamruralsouthnpt@wiltshire.pnn.police.uk

MP Claire Perry, 01672 519198 (10-5) or claire.perry.mp@parliament.uk

MEP - Graham Watson 01458 252265

CLUBS AND ORGANISATIONS

100+Club Cash Draw - Bernie Prolje 828391

Acoustic Club - Malcolm Shipp 827041

Book Clubs - the original: Sylvia Ewin 828325 - the other: Frank Teasdale 828617

Bouncy Club - Paulette Pardoe 07944 300350

Brownies - Helen Hook 828477

Cricket Club - Peter Wallis 828757

Fawlty Players Panto Group - Tessa Doe 828617

Fete Committee - Fiona Johnson 828401

Football Club - Dave Beaumont 01225 785067

Fun Station, Bulkington - Anne Saywell 01380 828931

Gardening Club - Joyce Brand 828433

Historic Houses Club - Tony Ewin 828325

LINK Scheme - 075320 55560

Lye Field Committee - Dave Sawyer 828583

Mothers' Union - Elizabeth Campbell 828451

Neighbourhood Watch - Brian Hunt (Seend) 828581; Cavan Moroney (Sells Green)

828606; Owen Burton (Seend Cleeve) 828820; John Scott (Bulkington) 828026.

Preschool - Liz Futter 828485

Poetry Group - Tessa Doe 828617

Ramblers - Gerald Salter 01225 706451

Royal British Legion - Roger Brind 828830;

Poppy Appeal - Joan Savage

Short Mat Bowls Club - Colin Waldeck 828946

Tennis Club - Ric Ellinger 828683

Theatre Club - Sylvia Ewin 828325; Marion Whitehead 828612

WEA - Pam Church - 828597

WI - Sarah Todhunter on 828730 and Jo Vaux on 828970

Youth Club (Seend and Bulkington) Elanor Oddy 07517 905446

Seend Post Office & Village Store

01380 828250

NEWSPAPERS & MAGAZINES

FRESH FRUIT & VEGETABLES

WINES BEERS & SPIRITS

GROCERIES

NATIONAL LOTTERY

POSTCARDS & STATIONERY



	Village Store	Post Office
Mon	9.00 - 5.30	9.00 - 5.30
Tues	9.00 - 5.30	9.00 - 5.30
Wed	9.00 - 5.30	9.00 - 4.30*
Thurs	9.00 - 1.00	9.00 - 1.00
Fri	9.00 - 5.30	9.00 - 5.30
Sat	8.30 - 1.00	9.00 - 1.00
Sun	9.00 - 10.30	Closed
Bank Holidays	9.00 - 10.30	Closed

* note early closing